

Appendix H: Areas Subject to Hydromodification Management Requirements

This appendix presents the countywide Hydromodification Management (HM) Control Area Map, which identifies the geographical areas that are subject to hydromodification management (HM) requirements. The full countywide HM Control Area Map is followed by a series of maps that show detailed areas of the county in which the HM control area boundary does not follow major roadways.

<i>Map Name</i>	<i>Page(s)</i>
▪ <i>Countywide HM Control Area Map</i>	H-2
▪ <i>Map Index for HM Control Area in Selected Areas of San Mateo County</i>	H-3
▪ <i>City of Atherton (Map 1 of 1)</i>	H-4
▪ <i>Cities of Brisbane and South San Francisco (Map 1 of 1)</i>	H-5
▪ <i>Cities of Colma and South San Francisco (Map 1 of 1)</i>	H-6
▪ <i>Daly City and Brisbane (Map 1 of 1)</i>	H-7
▪ <i>Daly City and Unincorporated County (Maps 1 and 2)</i>	H-8, 9
▪ <i>City of Millbrae (Map 1 of 1)</i>	H-10
▪ <i>Cities of Millbrae and Burlingame (Maps 1 and 2)</i>	H-11, 12
▪ <i>City of Pacifica (Maps 1 and 2)</i>	H-13, 14
▪ <i>Cities of Pacifica, San Bruno and South San Francisco (Map 1 of 1)</i>	H-15
▪ <i>Cities Redwood City and San Carlos (Map 1 of 1)</i>	H-16
▪ <i>Cities of San Bruno and Millbrae (Maps 1 and 2)</i>	H-17, 18
▪ <i>City of San Mateo (Map 1 of 1)</i>	H-19
▪ <i>Cities of San Mateo and Hillsborough (Map 1 of 1)</i>	H-20


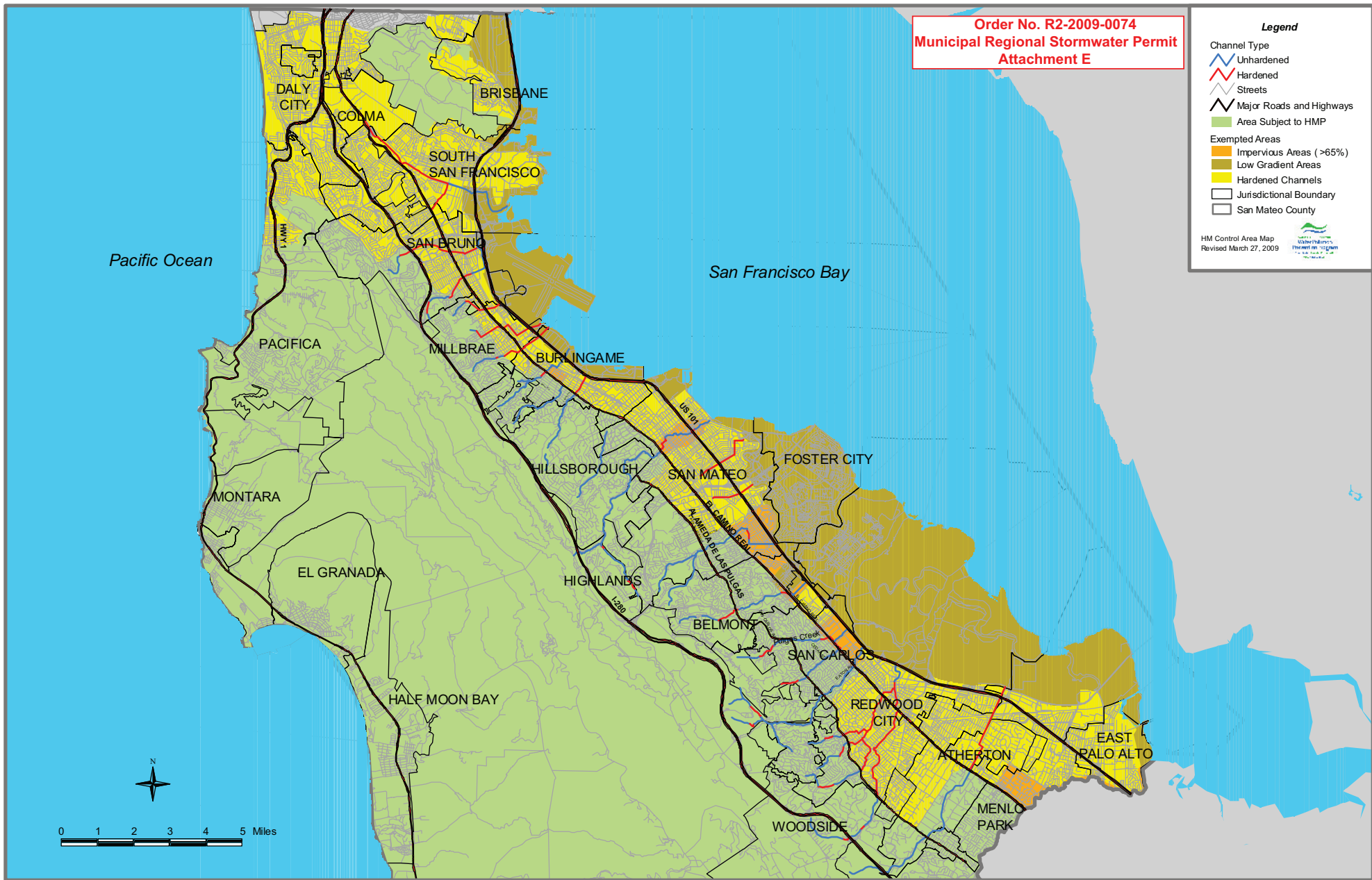
Requirements vary from one municipality to the next. Contact the local jurisdiction to obtain electronic files for use in preparing these documents, and to obtain information on municipality-specific requirements.

**Order No. R2-2009-0074
Municipal Regional Stormwater Permit
Attachment E**

Legend





- Channel Type
 - Unhardened
 - Hardened
 - Streets
 - Major Roads and Highways
- Area Subject to HMP
 - Area Subject to HMP
- Exempted Areas
 - Impervious Areas (>65%)
 - Low Gradient Areas
 - Hardened Channels
- Jurisdictional Boundary
 - San Mateo County

HM Control Area Map
Revised March 27, 2009





MAP INDEX FOR HM CONTROL AREA IN SELECTED AREAS OF SAN MATEO COUNTY*


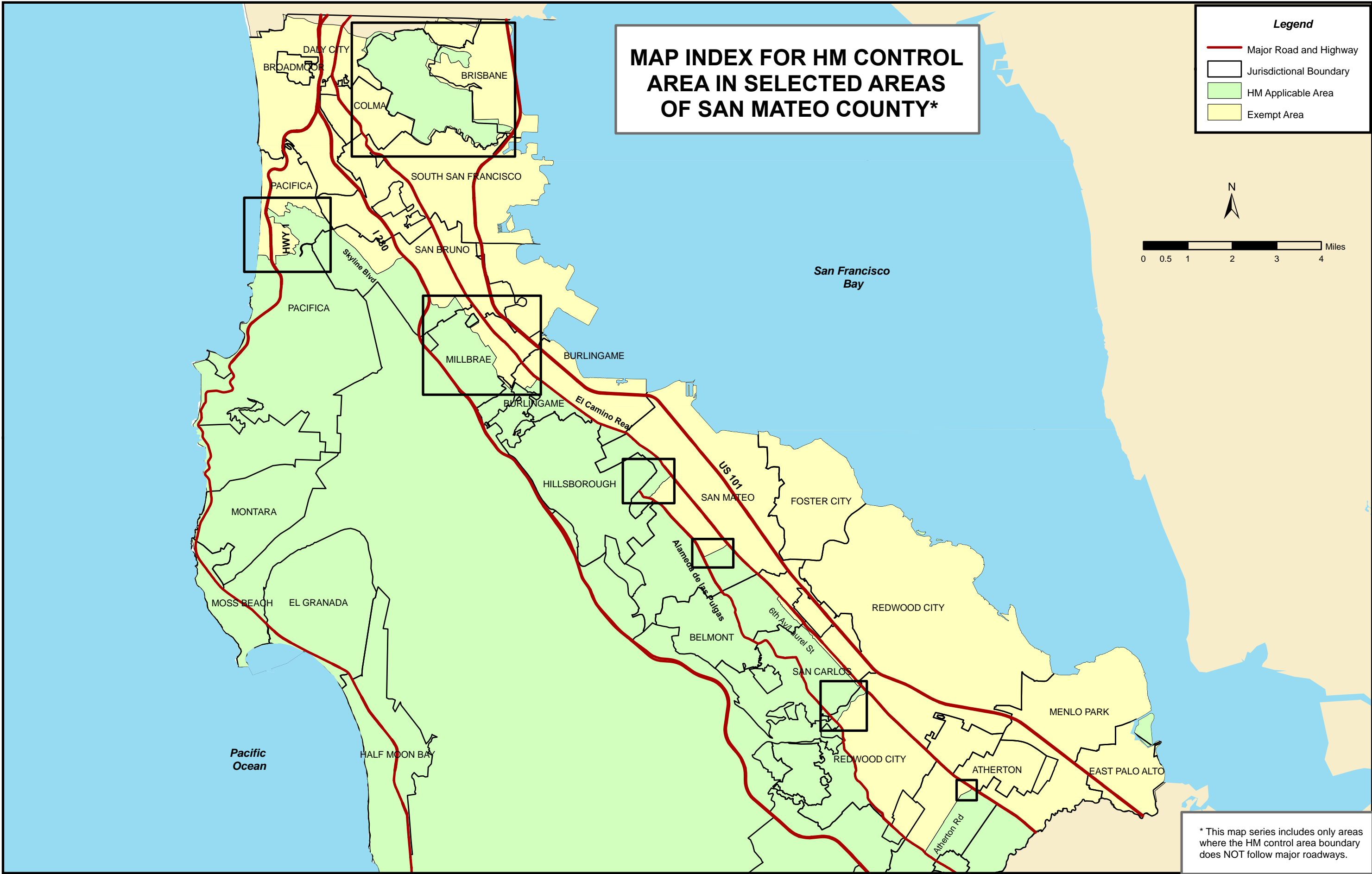
Legend

-  Major Road and Highway
-  Jurisdictional Boundary
-  HM Applicable Area
-  Exempt Area

N

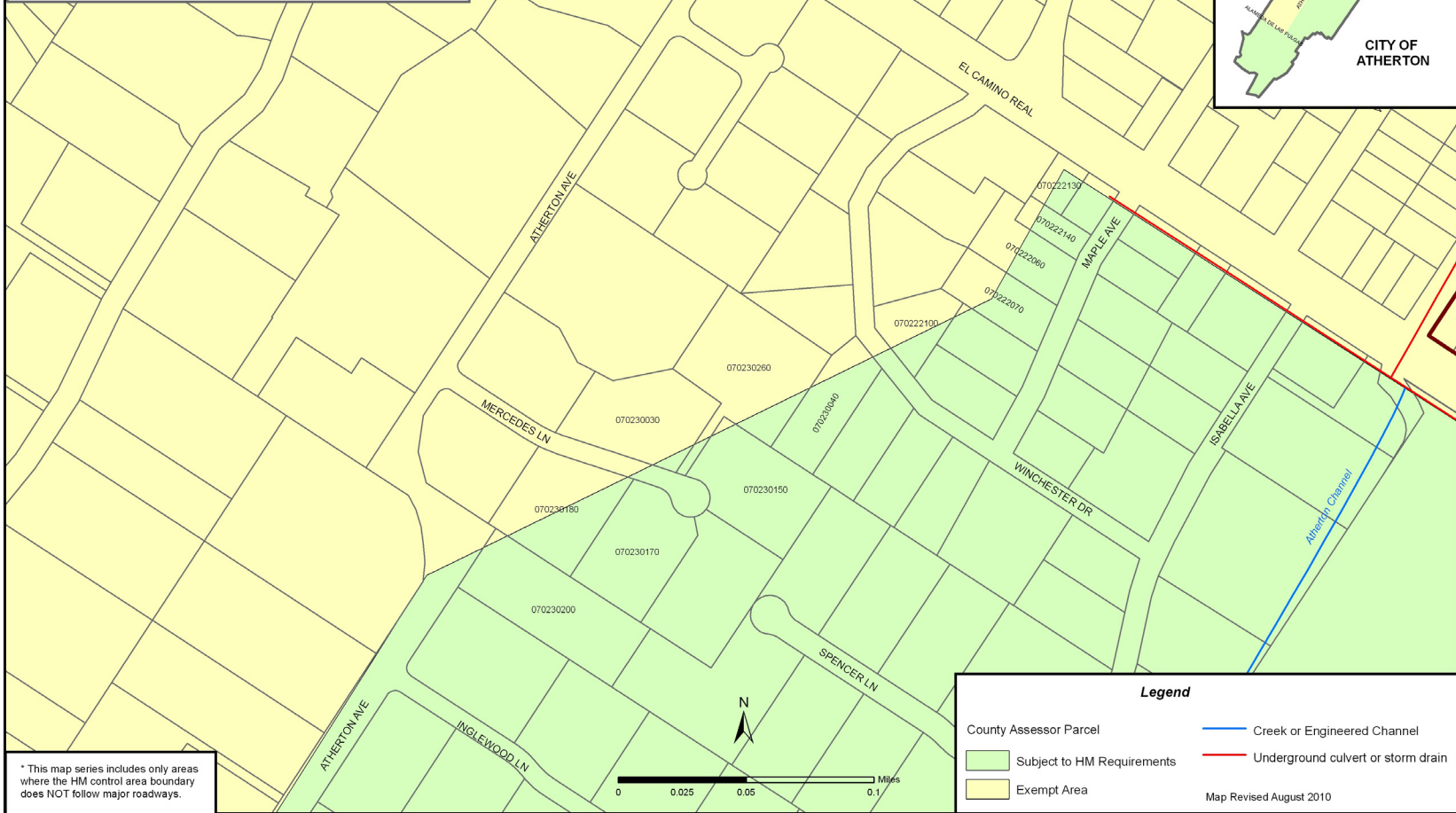


0 0.5 1 2 3 4 Miles

* This map series includes only areas where the HM control area boundary does NOT follow major roadways.

**City of Atherton
Hydromodification Management (HM)
Control Area Boundary for Selected Areas *
Map 1 of 1**

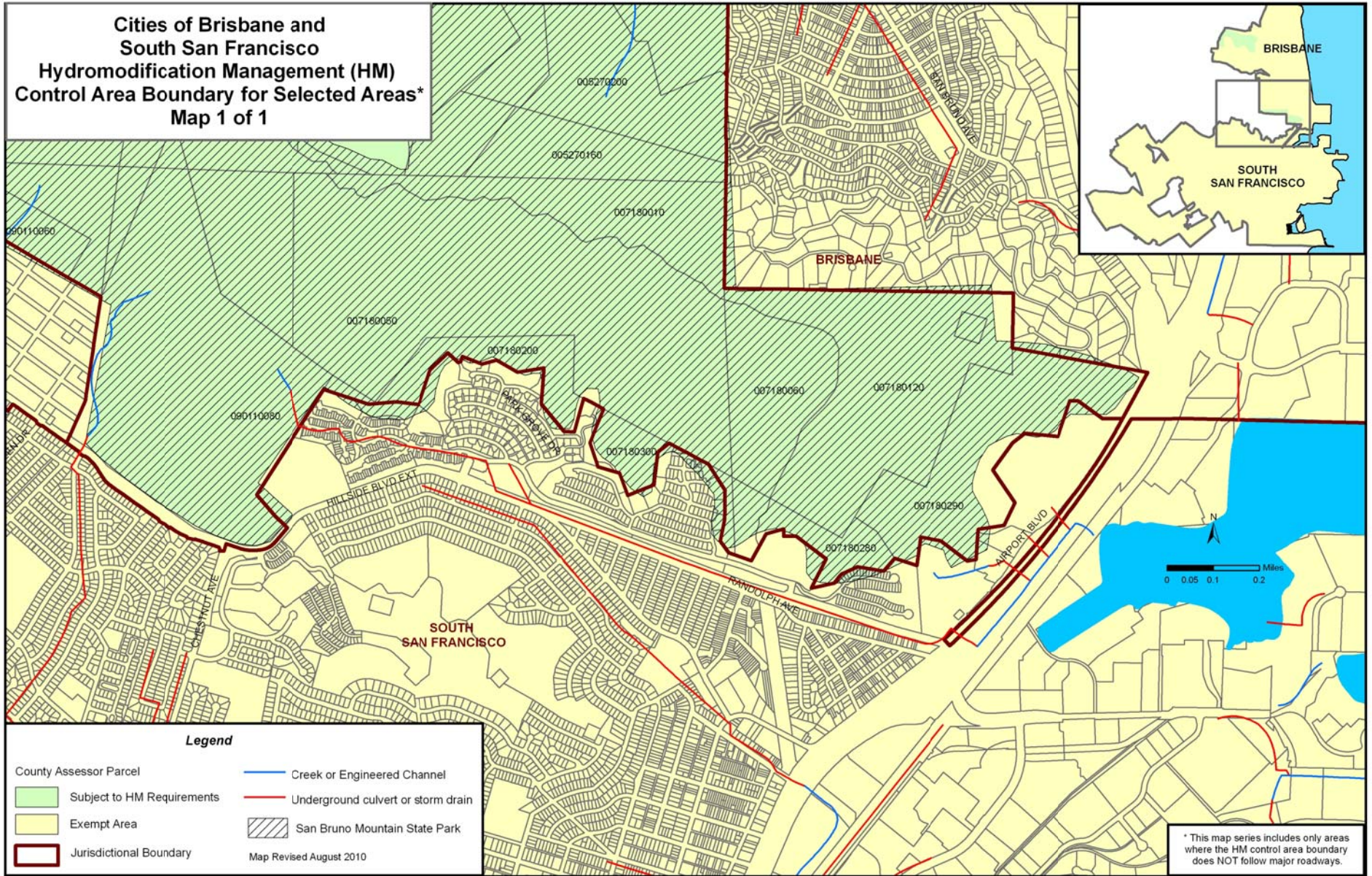


* This map series includes only areas where the HM control area boundary does NOT follow major roadways.

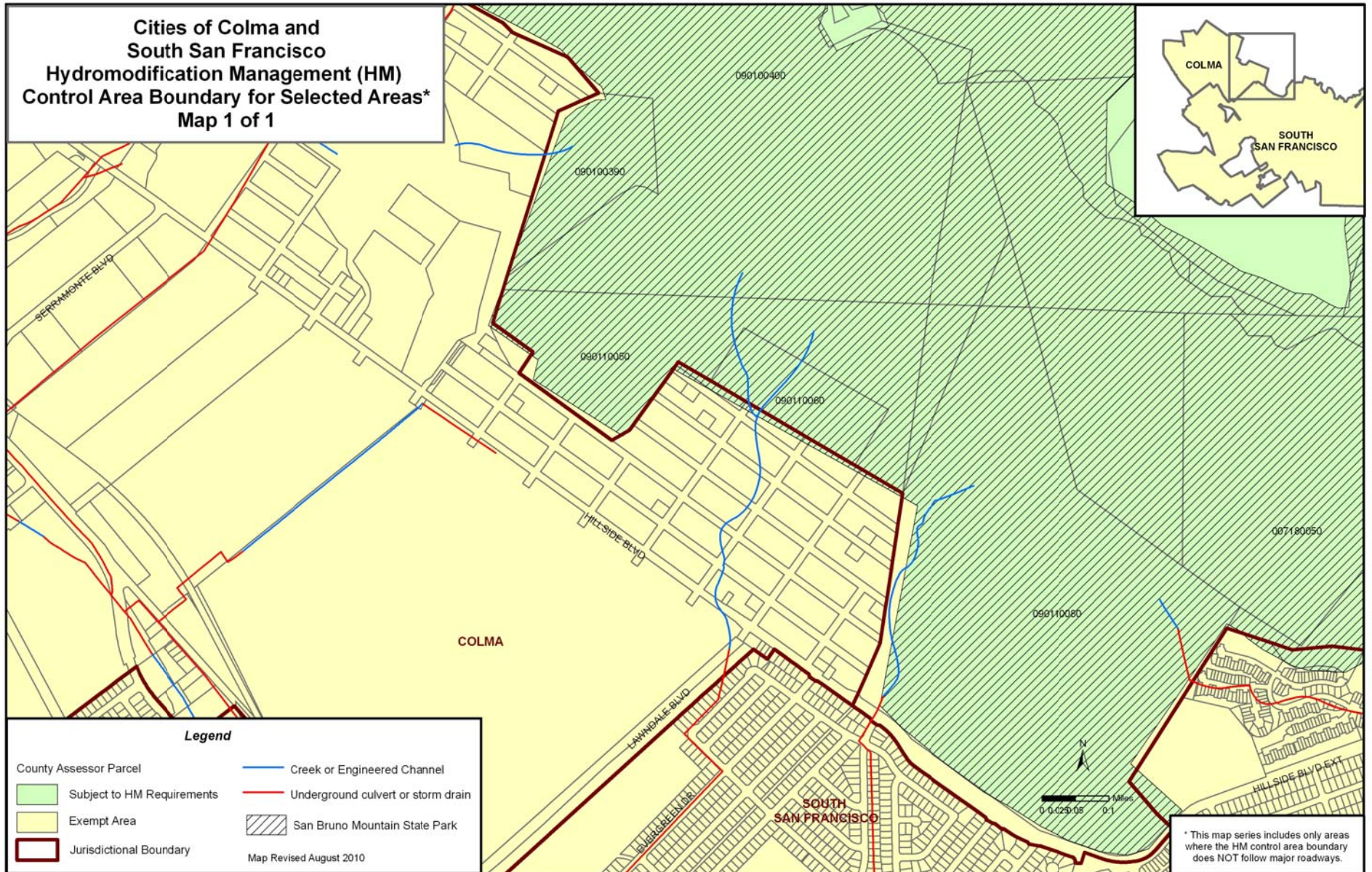
REFER TO BRISBANE AND DALY CITY MAP 1

Cities of Brisbane and South San Francisco
Hydromodification Management (HM)
Control Area Boundary for Selected Areas*
Map 1 of 1

REFER TO COLMA AND SOUTH SAN FRANCISCO MAP 1

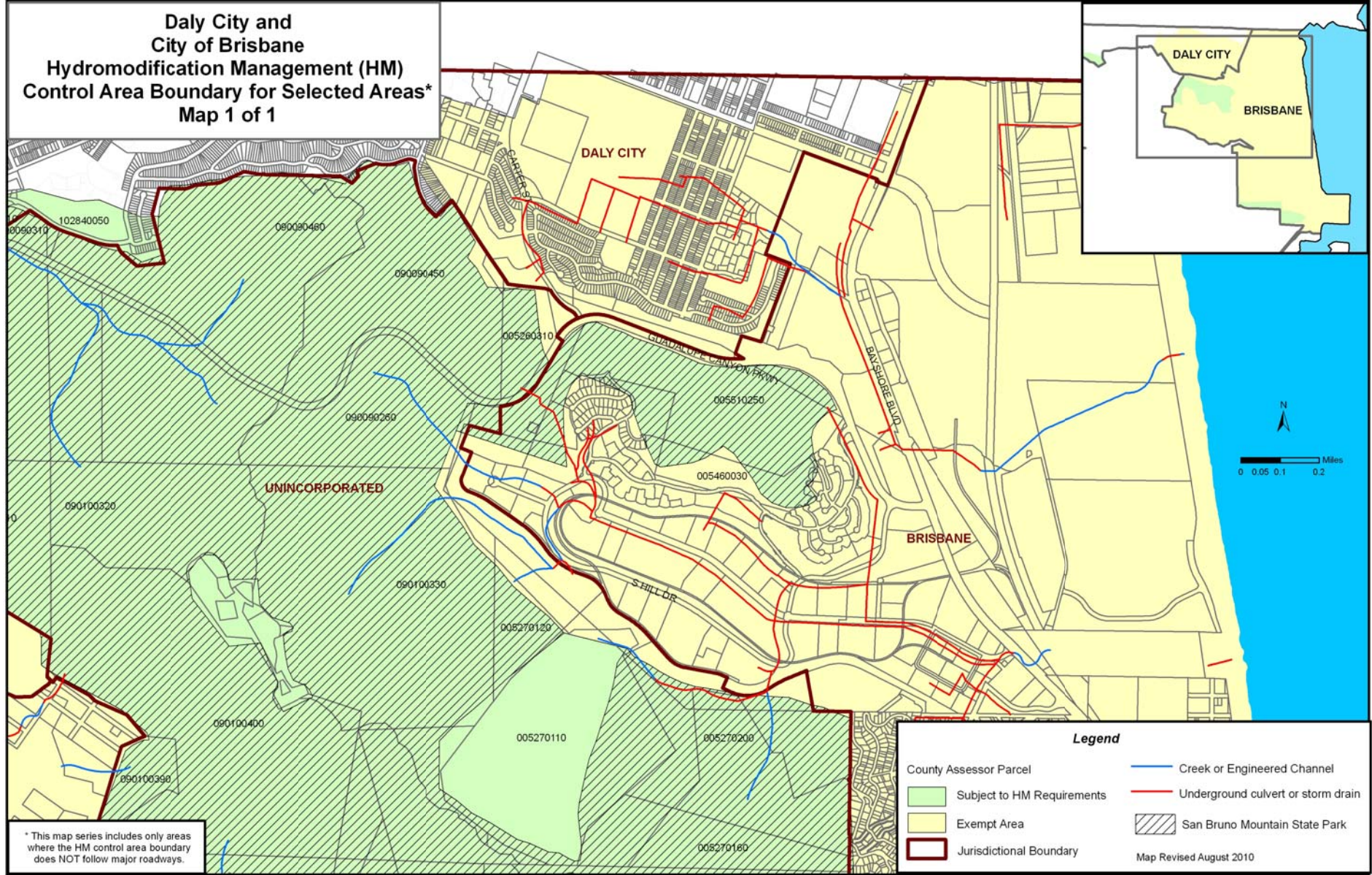


REFER TO DALY CITY AND UNINCORPORATED COUNTY MAP 2



Daly City and
City of Brisbane
Hydromodification Management (HM)
Control Area Boundary for Selected Areas*
Map 1 of 1

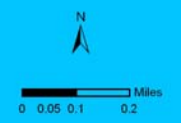
REFER TO DALY CITY AND UNINCORPORATED COUNTY MAP 1



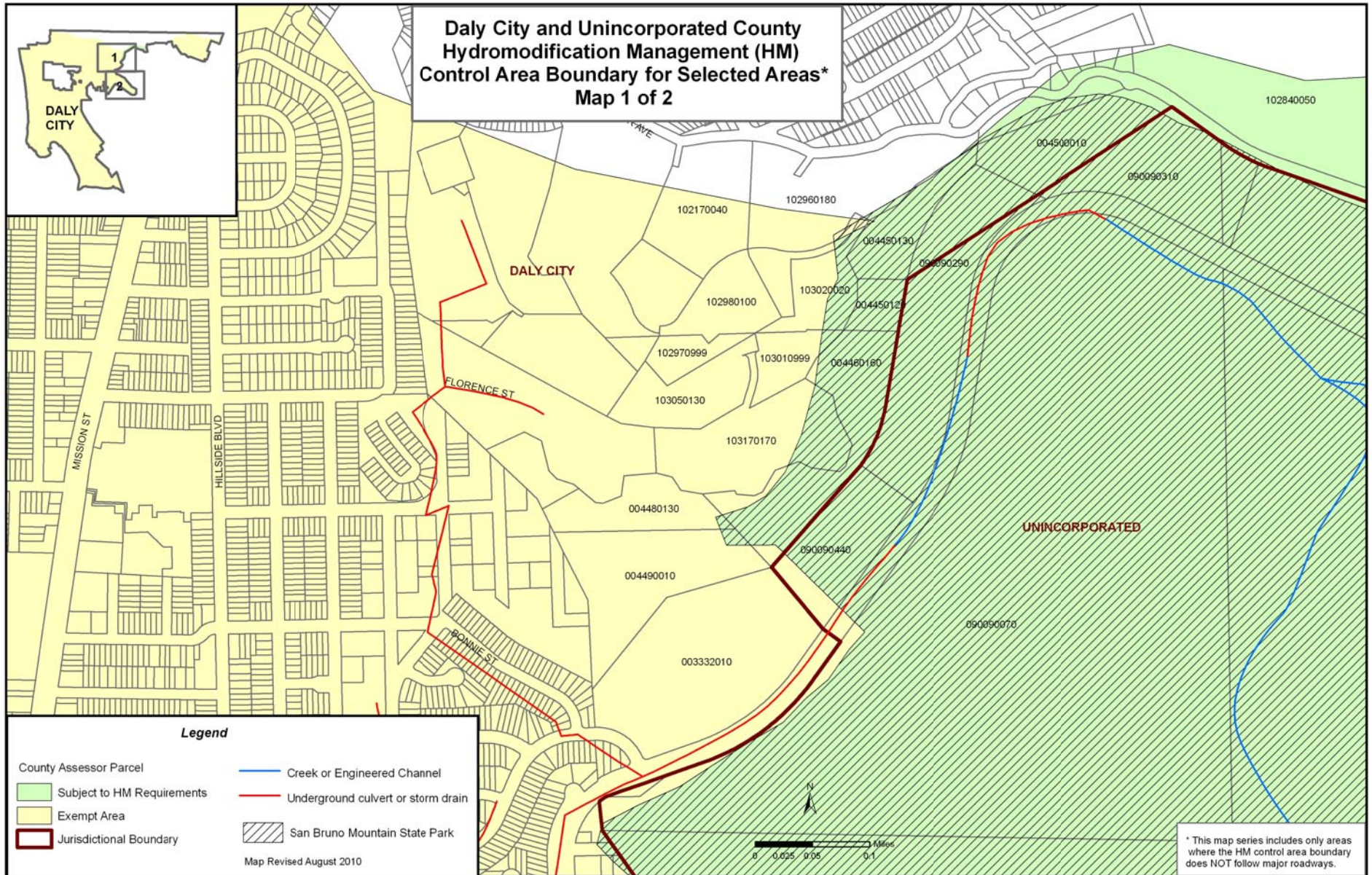
* This map series includes only areas where the HM control area boundary does NOT follow major roadways.

Legend

County Assessor Parcel	Creek or Engineered Channel
Subject to HM Requirements	Underground culvert or storm drain
Exempt Area	San Bruno Mountain State Park
Jurisdictional Boundary	Map Revised August 2010



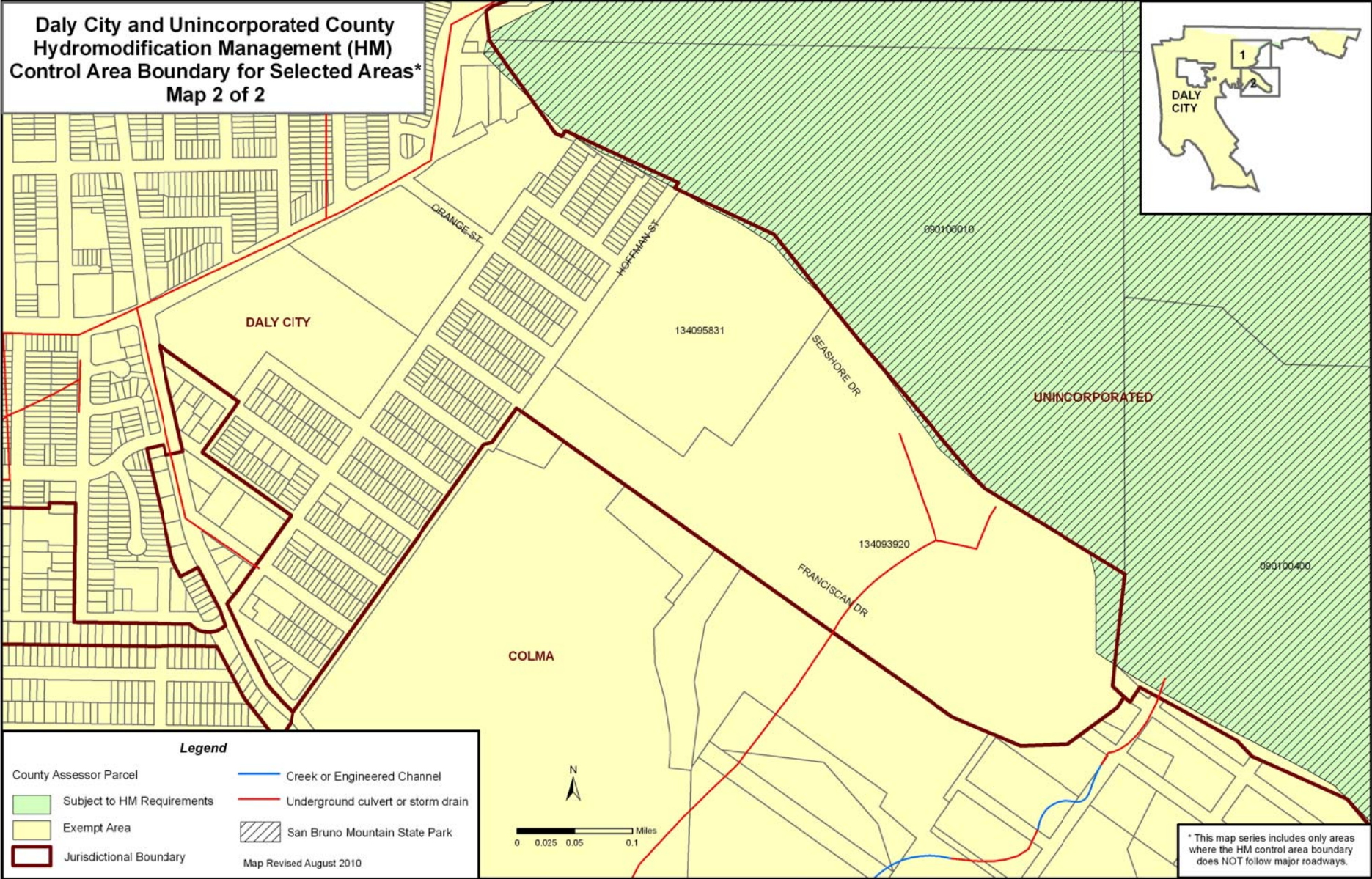
REFER TO BRISBANE AND SO. SAN FRANCISCO MAP 1



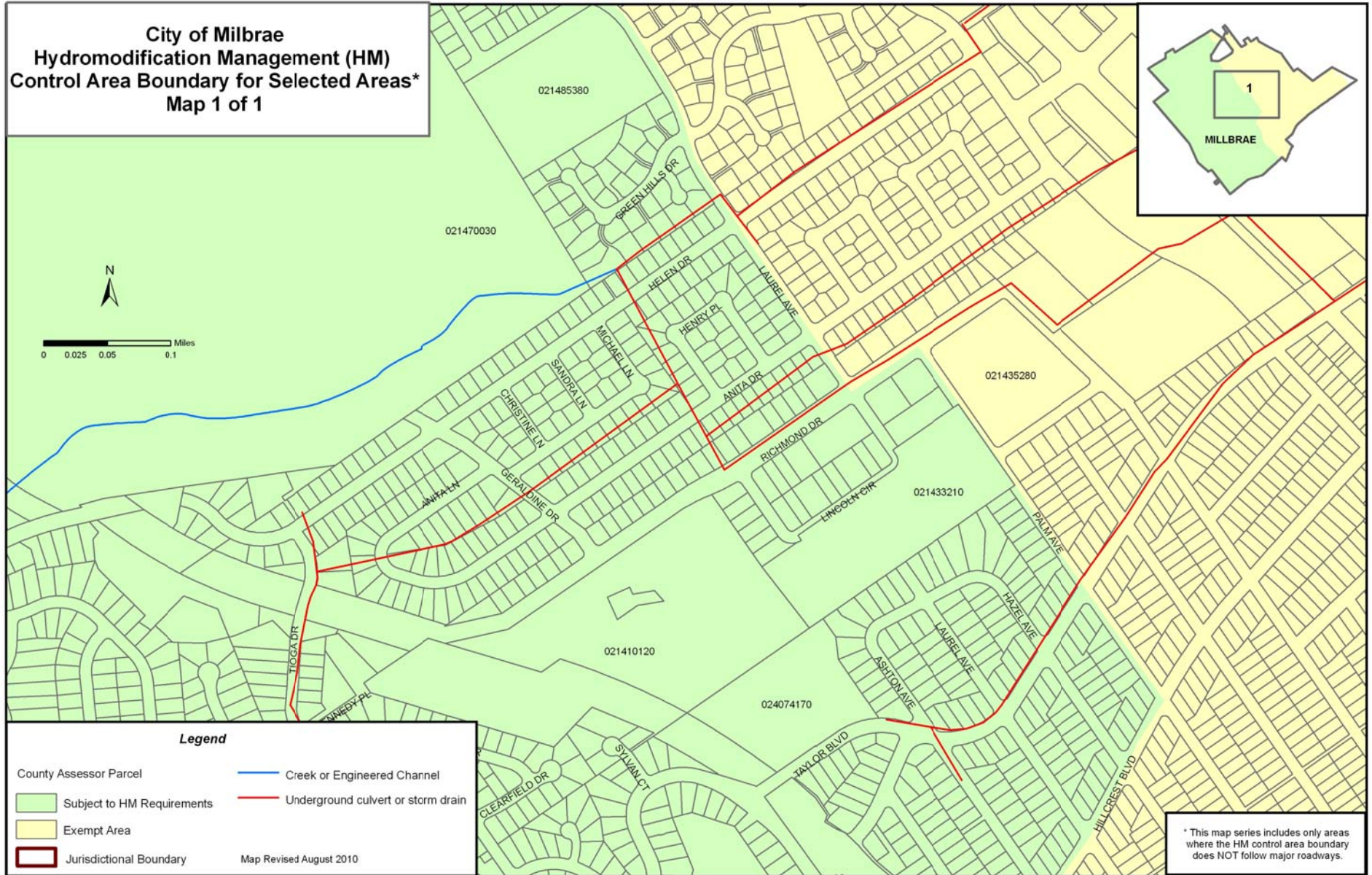
REFER TO DALY CITY AND UNINCORPORATED COUNTY MAP 2

REFER TO DALY CITY AND BRISBANE MAP 1

REFER TO DALY CITY AND UNINCORPORATED COUNTY MAP 1



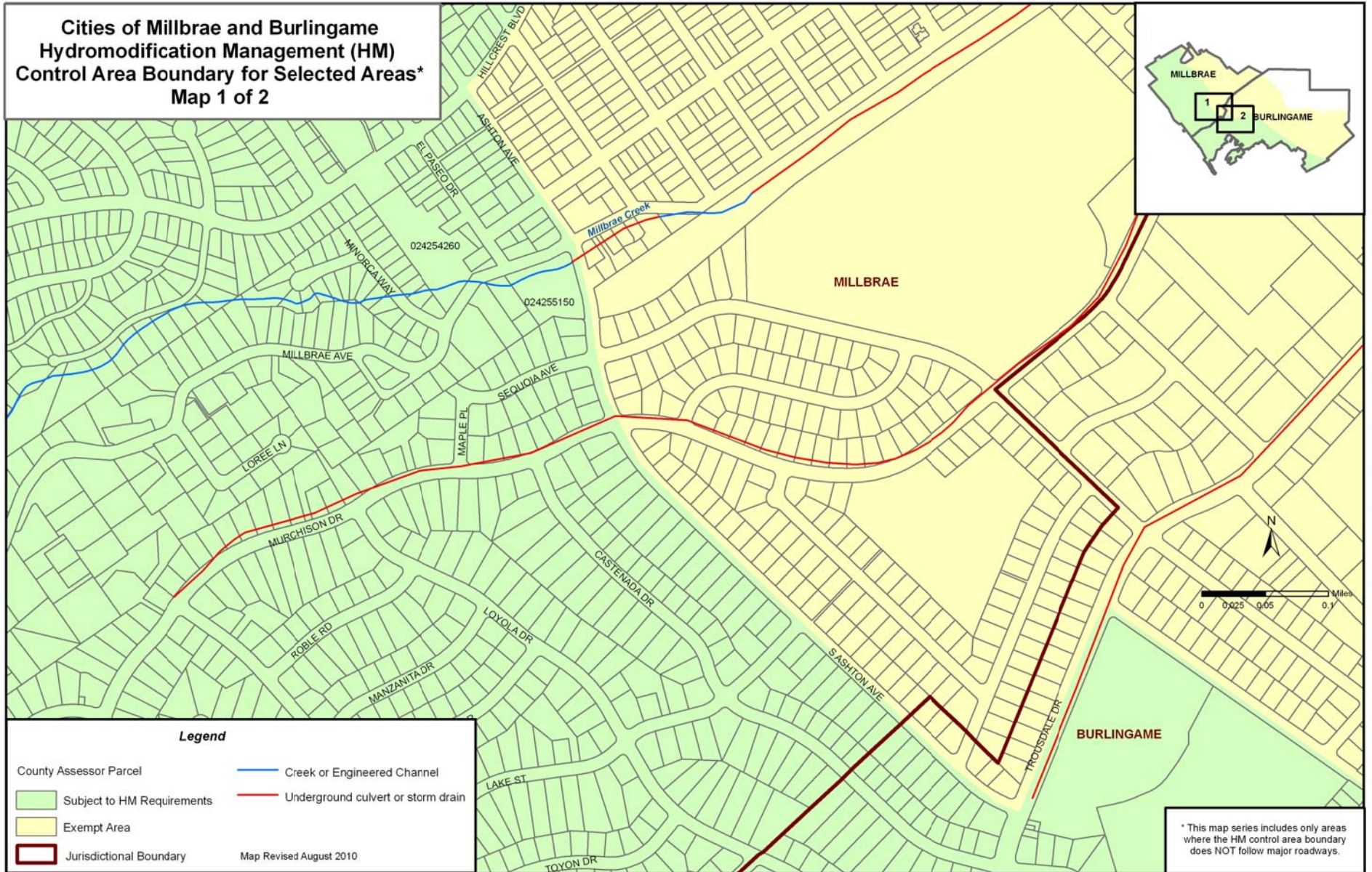
REFER TO SAN BRUNO AND MILLBRAE MAP 2



REFER TO MILLBRAE AND BURLINGAME MAP 1

REFER TO MILLBRAE MAP 1

**Cities of Millbrae and Burlingame
Hydromodification Management (HM)
Control Area Boundary for Selected Areas*
Map 1 of 2**

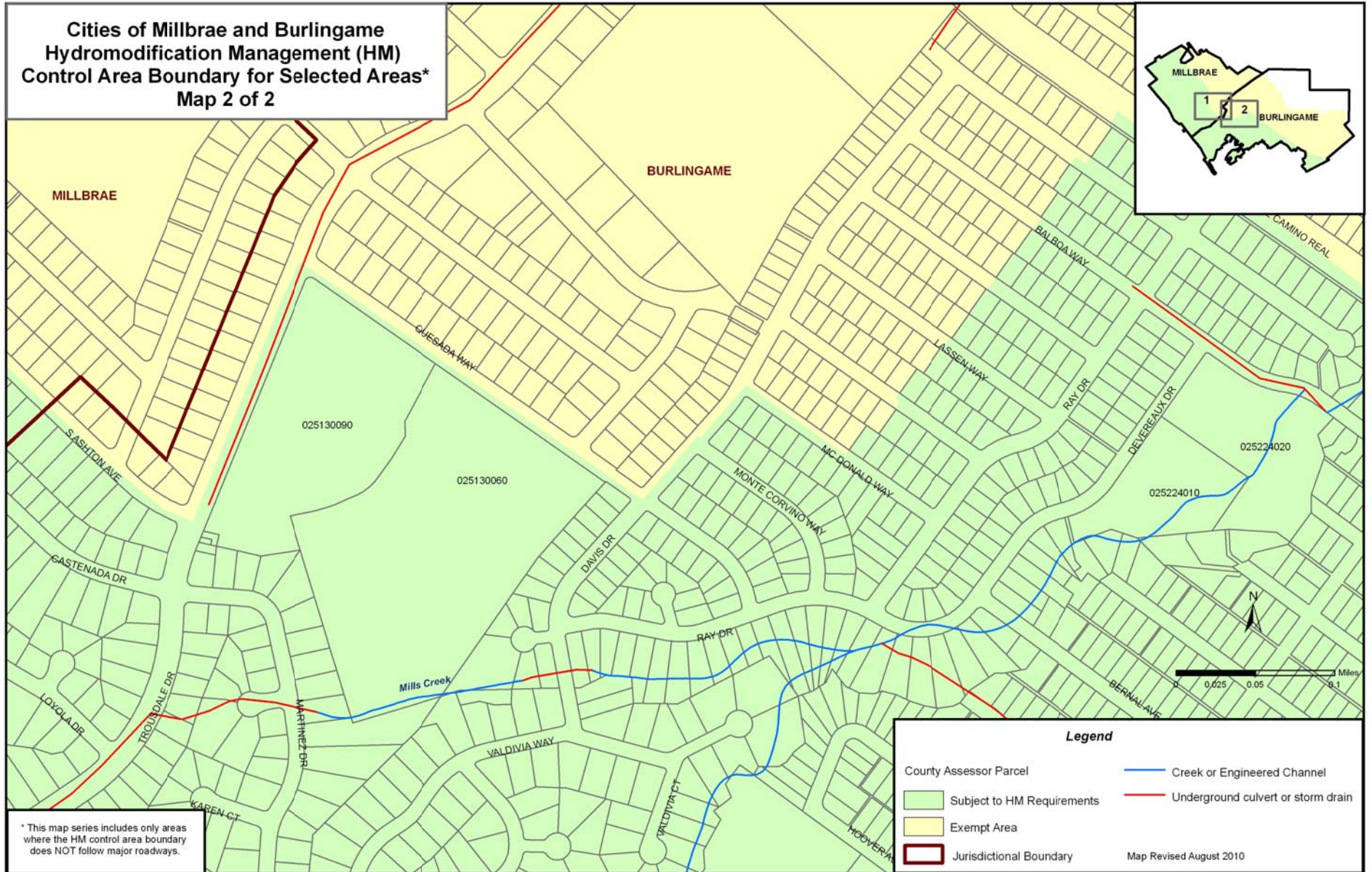


REFER TO MILLBRAE AND BURLINGAME MAP 2

**Cities of Millbrae and Burlingame
Hydromodification Management (HM)
Control Area Boundary for Selected Areas*
Map 2 of 2**



REFER TO MILLBRAE AND BURLINGAME MAP 1



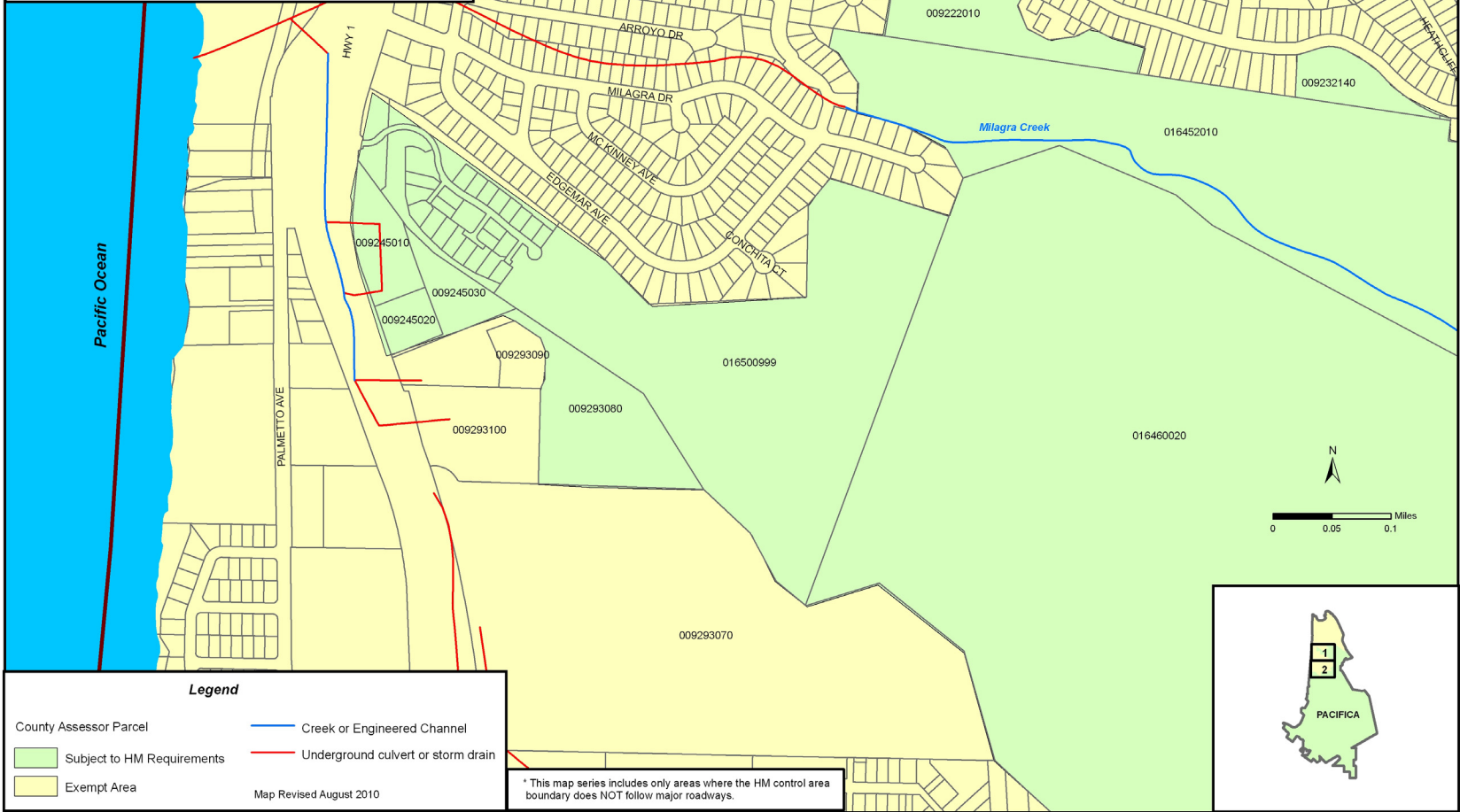
Legend

County Assessor Parcel	Creek or Engineered Channel
Subject to HM Requirements	Underground culvert or storm drain
Exempt Area	
Jurisdictional Boundary	

Map Revised August 2010

* This map series includes only areas where the HM control area boundary does NOT follow major roadways.

**City of Pacifica
Hydromodification Management (HM)
Control Area Boundary for Selected Areas*
Map 1 of 2**

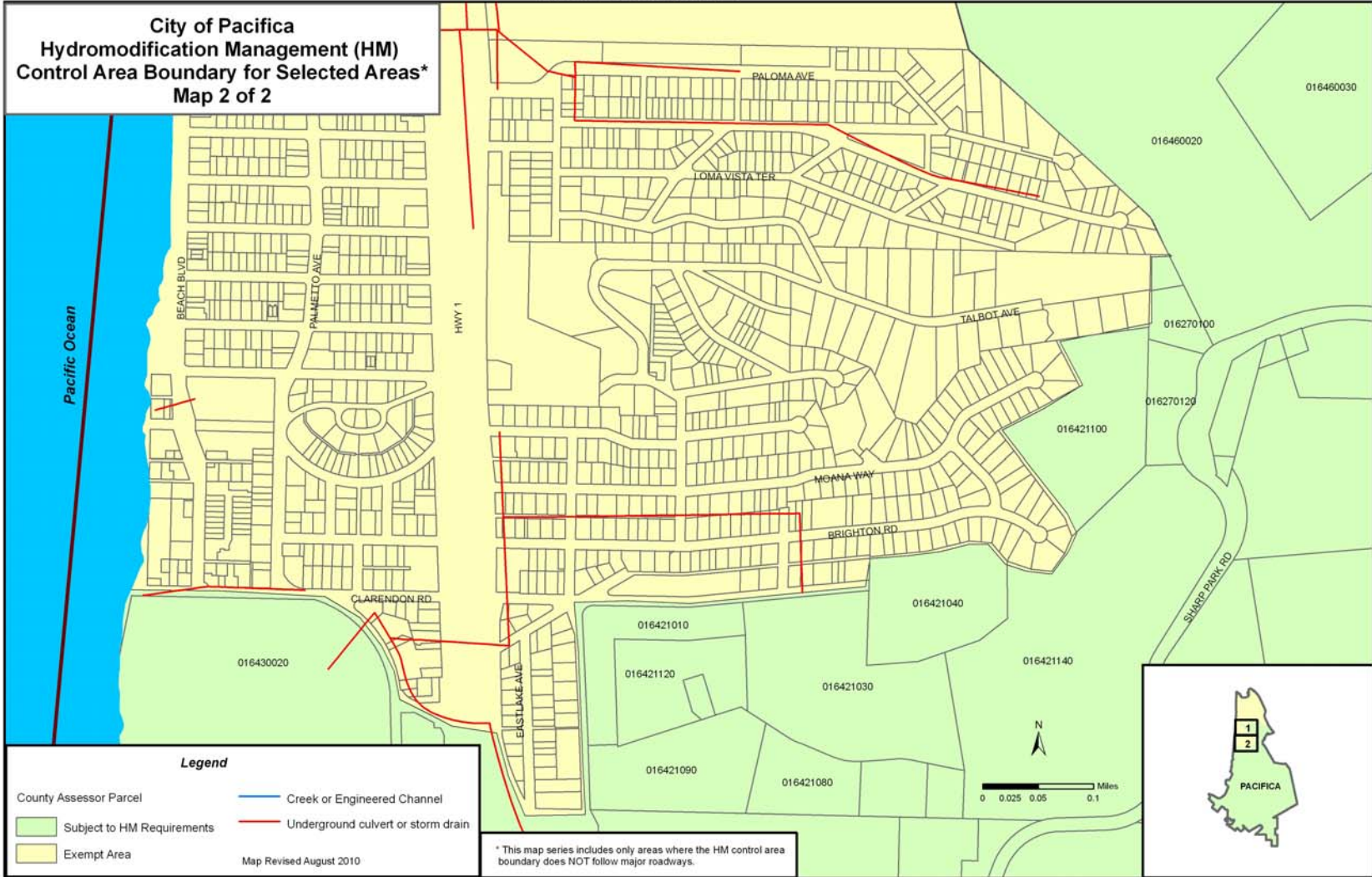


REFER TO PACIFICA, SAN BRUNO AND SOUTH SAN FRANCISCO MAP 1

REFER TO PACIFICA MAP 2

REFER TO PACIFICA MAP 1

**City of Pacifica
Hydromodification Management (HM)
Control Area Boundary for Selected Areas*
Map 2 of 2**



Legend

County Assessor Parcel	— Creek or Engineered Channel
Subject to HM Requirements	— Underground culvert or storm drain
Exempt Area	

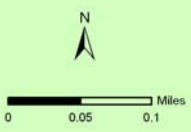
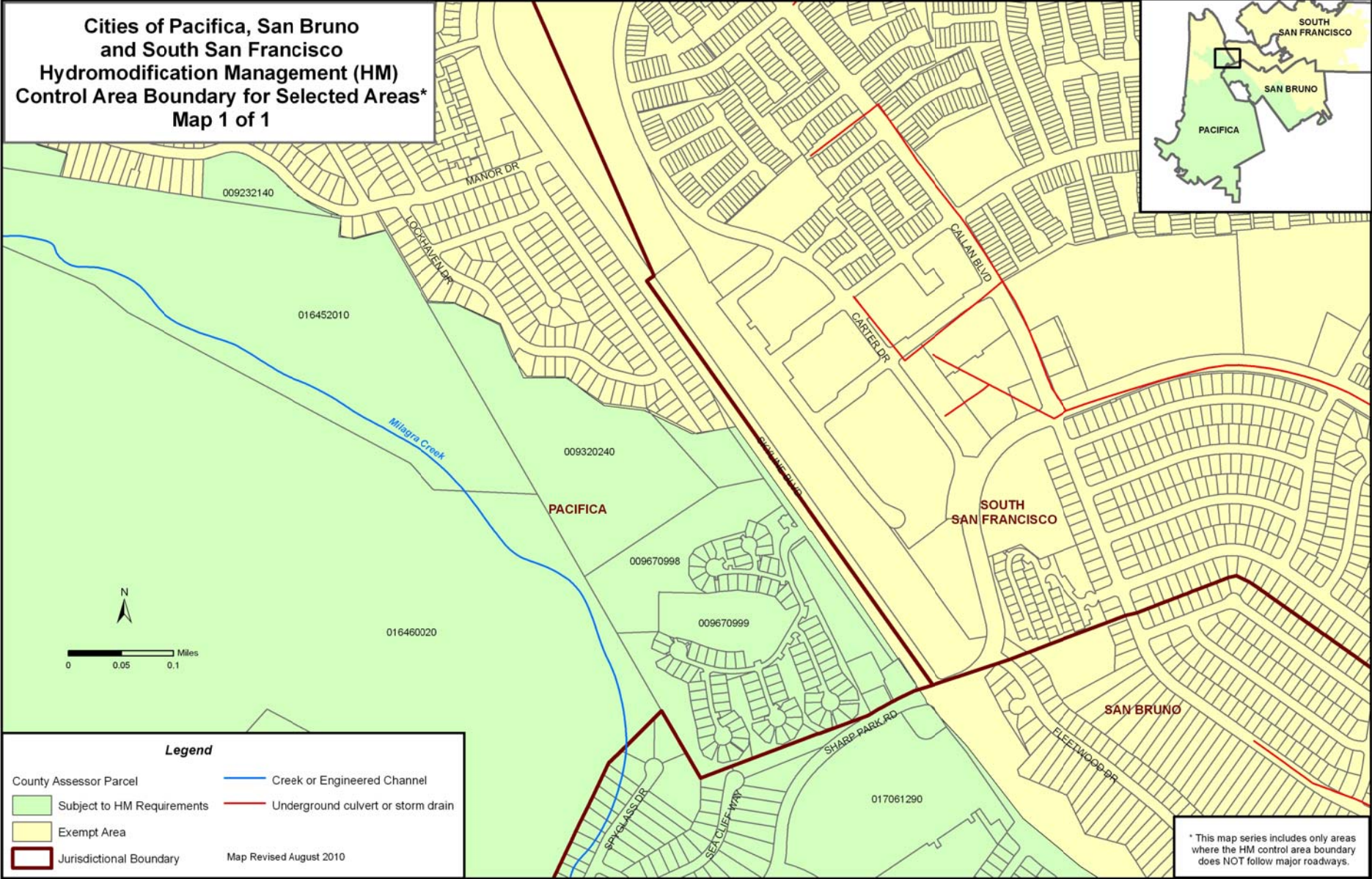
Map Revised August 2010

* This map series includes only areas where the HM control area boundary does NOT follow major roadways.

**Cities of Pacifica, San Bruno
and South San Francisco
Hydromodification Management (HM)
Control Area Boundary for Selected Areas*
Map 1 of 1**



REFER TO PACIFICA MAP 1

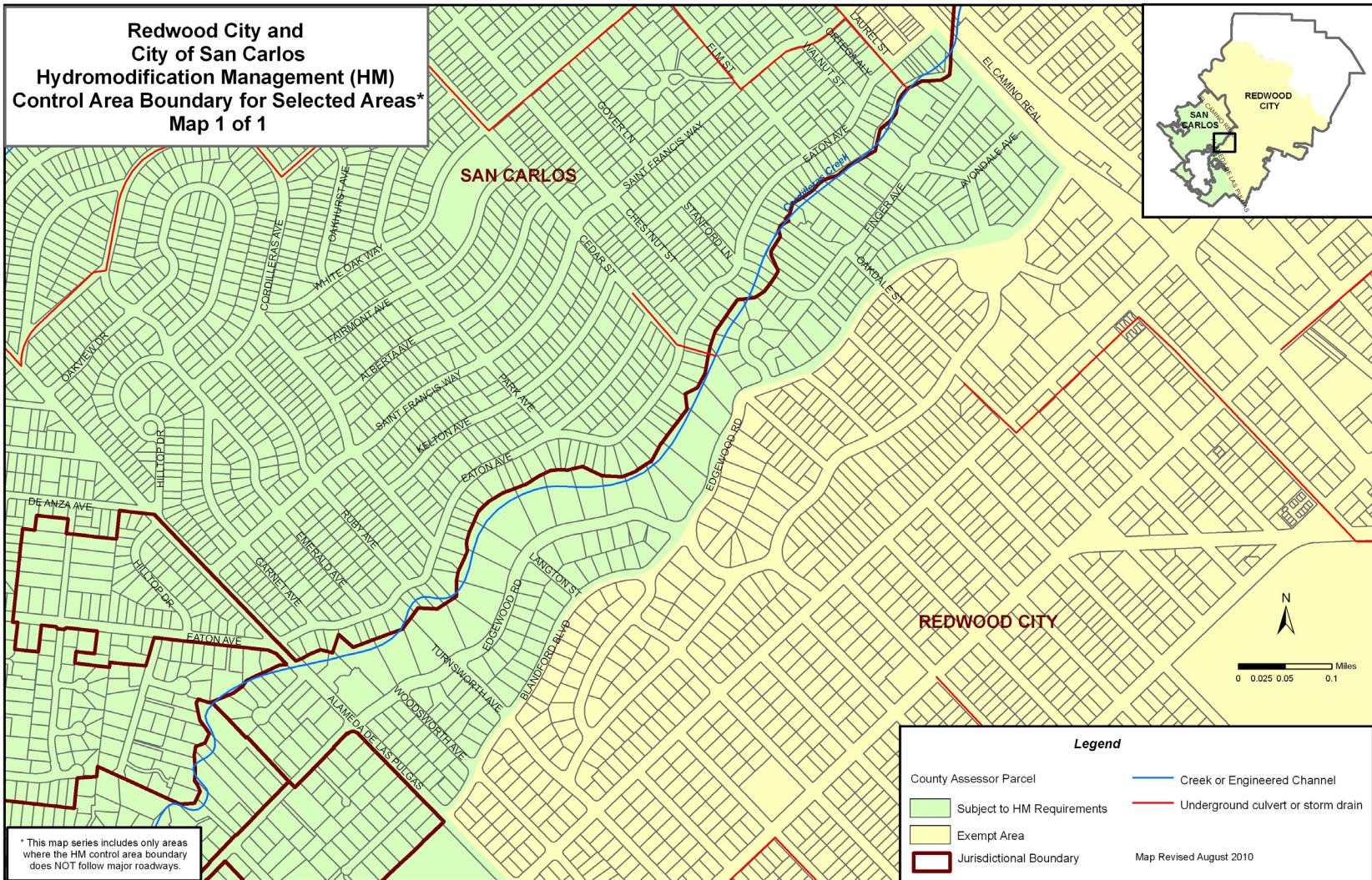


Legend

County Assessor Parcel	— Blue line —	Creek or Engineered Channel
Subject to HM Requirements	Underground culvert or storm drain	
Exempt Area		
Jurisdictional Boundary		

Map Revised August 2010

* This map series includes only areas where the HM control area boundary does NOT follow major roadways.



**Cities of San Bruno and Millbrae
Hydromodification Management (HM)
Control Area Boundary for Selected Areas*
Map 1 of 2**



Legend

County Assessor Parcel	— Blue line —	Creek or Engineered Channel
Subject to HM Requirements	— Red line —	Underground culvert or storm drain
Exempt Area		
Jurisdictional Boundary		

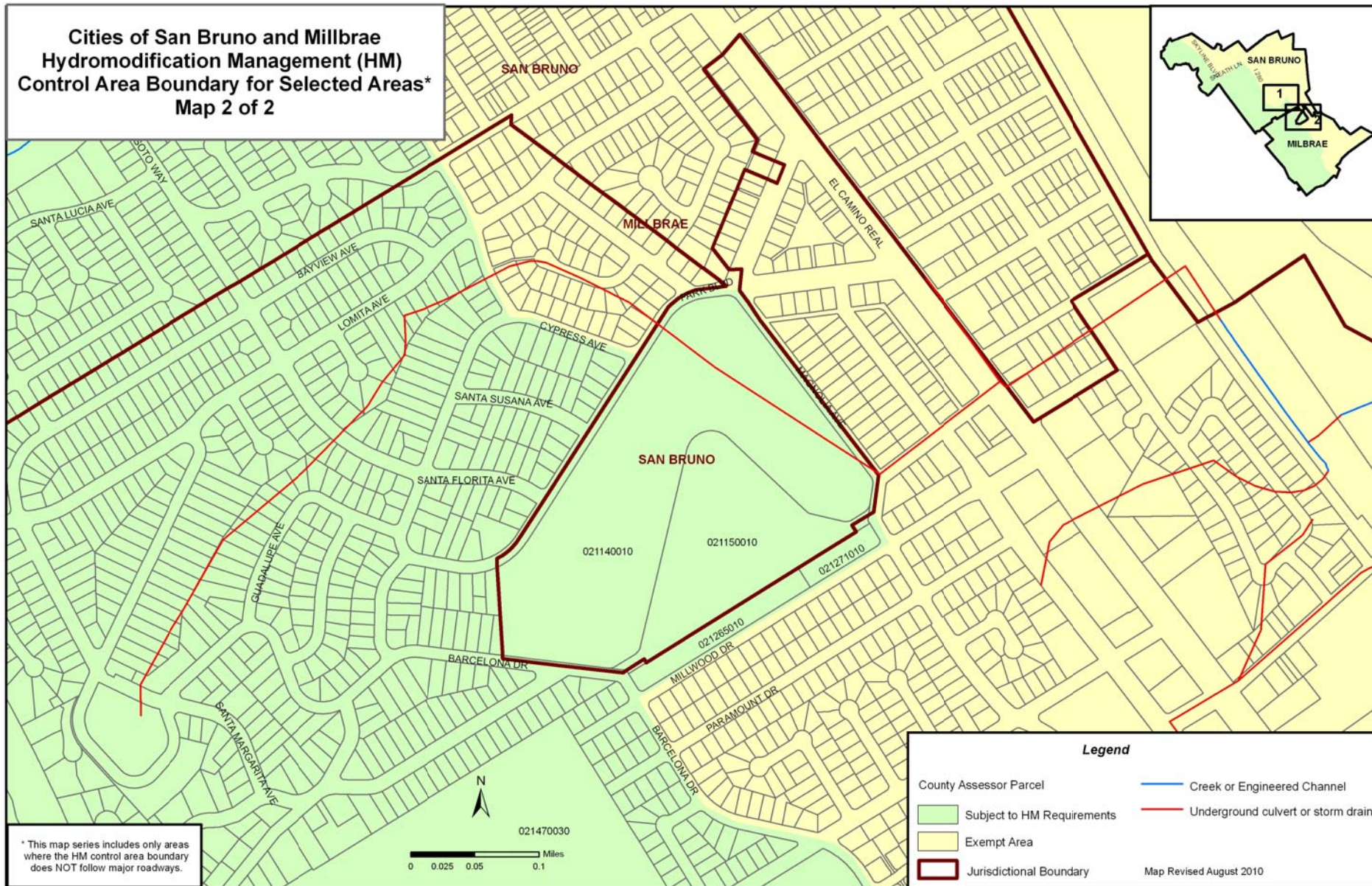
Map Revised August 2010

* This map series includes only areas where the HM control area boundary does NOT follow major roadways.

REFER TO SAN BRUNO AND MILLBRAE MAP 2

REFER TO SAN BRUNO AND MILLBRAE MAP 1

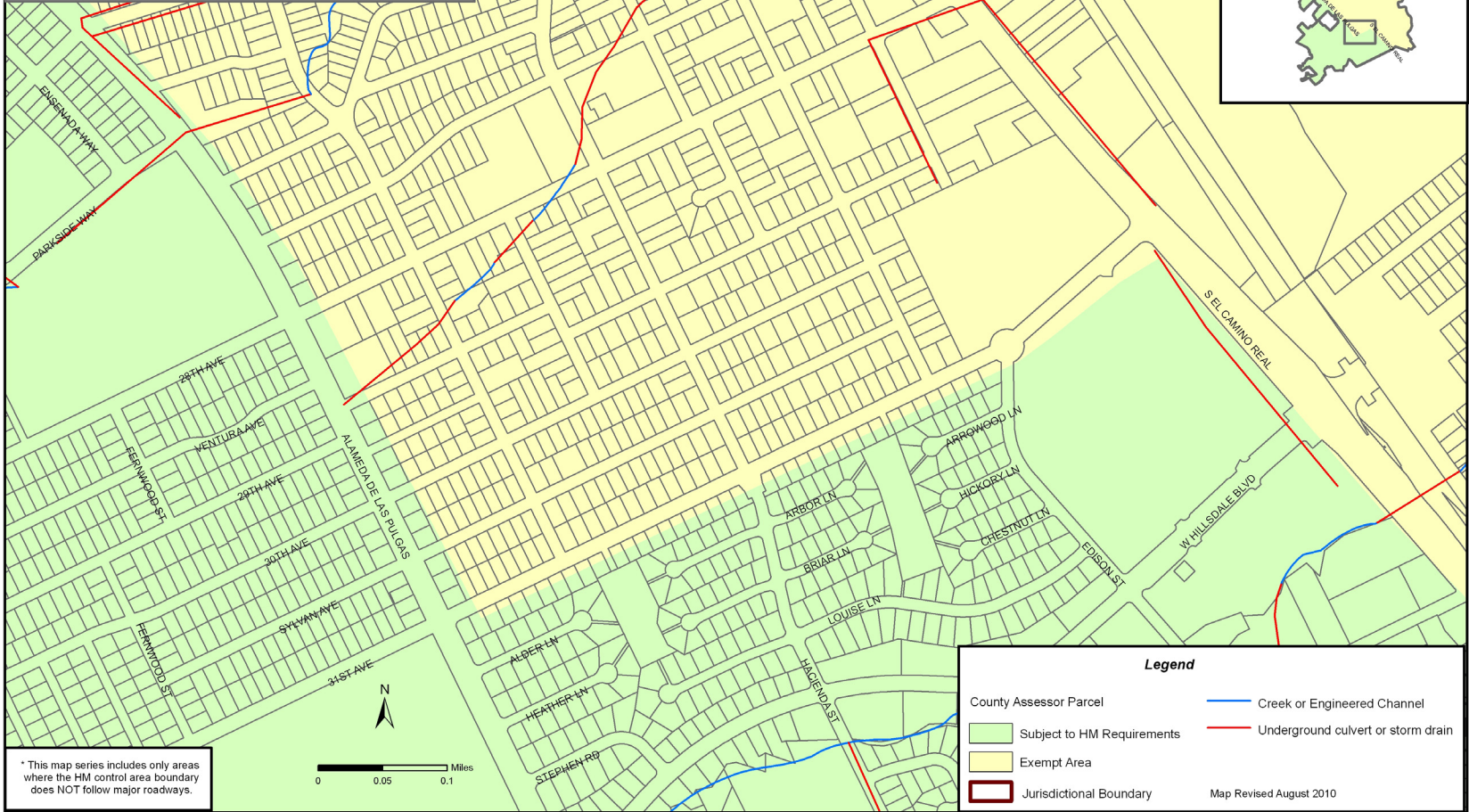
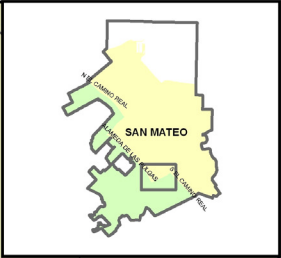
**Cities of San Bruno and Millbrae
Hydromodification Management (HM)
Control Area Boundary for Selected Areas*
Map 2 of 2**



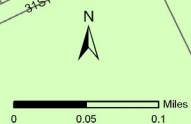
* This map series includes only areas where the HM control area boundary does NOT follow major roadways.

REFER TO MILLBRAE MAP 1

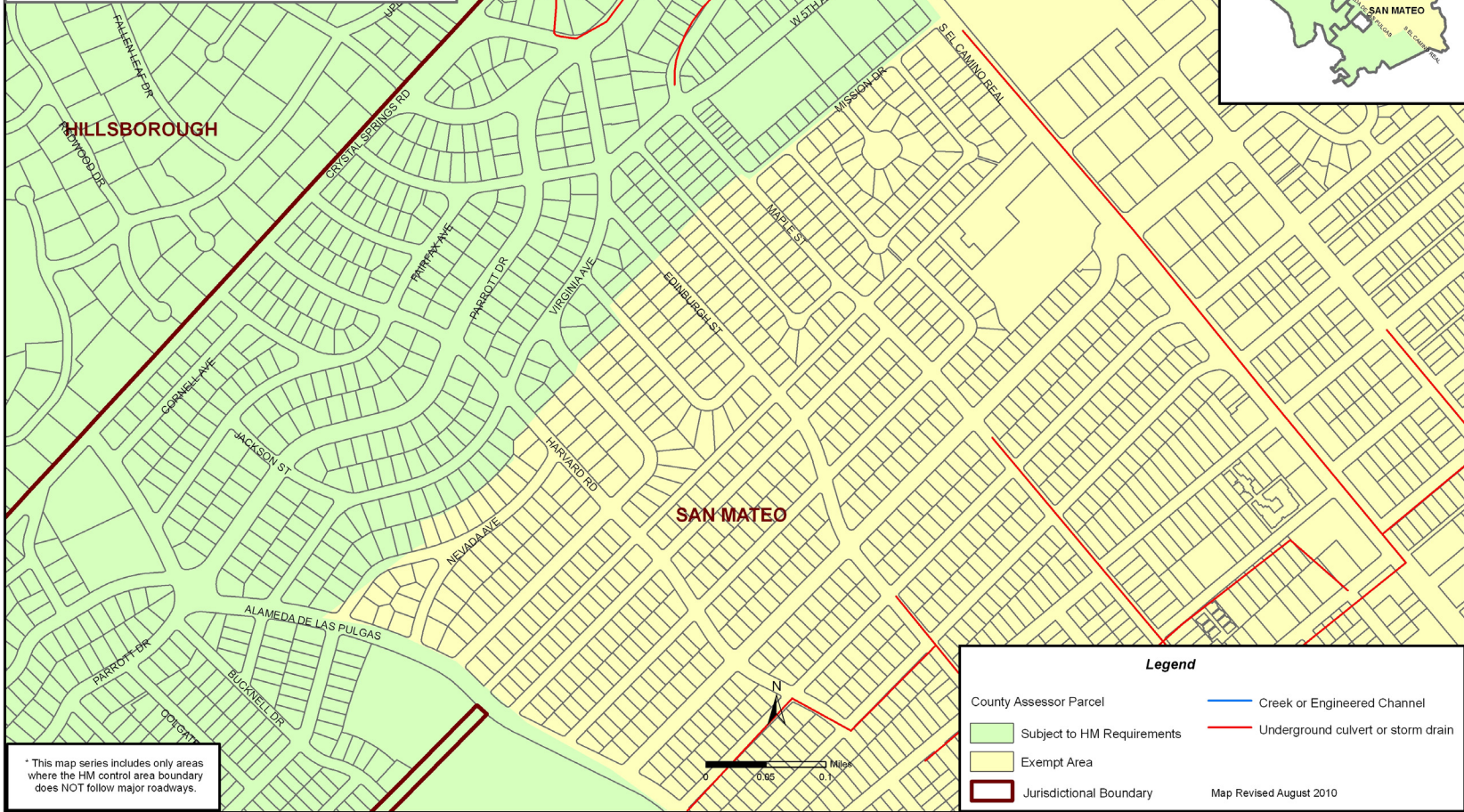
**City of San Mateo
Hydromodification Management (HM)
Control Area Boundary for Selected Areas*
Map 1 of 1**



* This map series includes only areas where the HM control area boundary does NOT follow major roadways.



**City of San Mateo and Hillsborough
Hydromodification Management (HM)
Control Area Boundary for Selected Areas*
Map 1 of 1**



* This map series includes only areas where the HM control area boundary does NOT follow major roadways.

Legend

County Assessor Parcel	Creek or Engineered Channel
Subject to HM Requirements	Underground culvert or storm drain
Exempt Area	
Jurisdictional Boundary	Map Revised August 2010