



CASE SCENARIO: Auto Repair

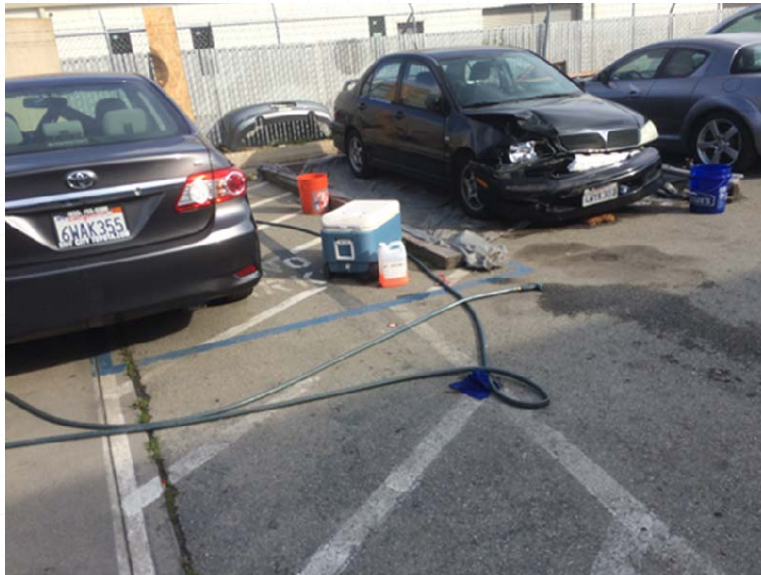
City of South San Francisco
Environmental Compliance

Auto Repair shop with improvised wash pad

Auto repair is in a tucked away area, which is hard to see from a street view. Upon Entering the facility area however...

First items noticed:

- Improvised wash pad in disrepair
 - Tarp is in bad condition
 - No containment on front of pad
- Hose and water marks on ground indicating washing occurred with inadequate BMPs in place



Water marks on ground that indicated an illicit discharge has occurred from the wash pad area, traveling into the parking lot storm drain.



Rear of Auto Repair shop with ongoing discharge

- Waters travelling from a paint booth with no BMPs
- Wet sanding and hosing down paint booth area most likely cause of discharge
- Water noticeably flowing to stormdrain on back on property



Enforcement:

- Cease discharge of water
- NOV issued requiring:
 - All wash waters must not be discharged to storm sewer system.
 - Wash pad must be repaired or replaced and all BMPs must be implemented to prevent wash waters from entering storm sewer system. Wash pad must be adequate to handle any washing that takes place on site. 30 days given for repair.
- Administrative citation of \$500.00 issued



Follow Up

- Improvised wash pad still in disrepair
- Evidence of another illicit discharge coming from wash pad and flowing into storm drain



Rear of auto repair

- Illicit Discharge occurring again from paint booth
- White power indicating possible wet sanding on ground, contaminants going to stormdrain
- Additional evidence of water from rear corner of property, indicating possible wash down of parts or vehicle



Enforcement:

- Cease discharge of water
- NOV issued requiring:
 - All wash waters must not be discharged to storm sewer system.
 - Wash pad must be repaired or replaced and all BMPs must be implemented to prevent wash waters from entering storm sewer system. Wash pad must be adequate to handle any washing that takes place on site. Additional 30 days given for repair.
 - BMPs must be used to prevent wash waters from exiting paint booth and entering the stormdrain system.
- Additional administrative citation of \$500.00 issued



Second Follow Up Inspection

- Improvised wash pad has been slightly improved
 - New tarp added
 - Front of wash pad is slightly raised with board across to keep waters in
 - Upon inspection no real evidence of wash waters entering stormdrain from pad



Water stain in rear of facility, but has not reached stormdrain. No flow seen when on site, in this case water will evaporate before reaching stormdrain as is.



Ongoing Enforcement:

- This case study is still on ongoing problematic facility.
- Increased monitoring of facility has been implemented. Administrative citations will be issued if non-stormwater discharges occur.
- Contacting facility owner or property owner will occur to try to bring facility into ongoing compliance. Additionally, they will be informed to keep their dumpster lids closed.
- Will recommend or require, if needed, be a higher berm around improvised wash pad or plugs for stormdrains on property.

