

O&M (C.3.h) Inspections FY 2016/2017 Implementation

Kristin Kerr
EOA, Inc.

February 1, 2017

Outline of Presentation

- **Background on MRP**
- **MRP C.3.h Implementation**
- **MRP C.3.h Reporting**
- **Resources**

Municipal Regional Permit (MRP)

- **Regional permit regulating municipal stormwater systems**
- **Applies to 76 cities, counties, and districts in:**
 - Santa Clara, Alameda, Contra Costa, and San Mateo Counties, Fairfield and Suisun City (Solano County), Vallejo (Solano County)
- **Provision C.3 covers requirements for new development and redevelopment projects, and inspection and reporting requirements**



Permanent Facilities that Require O&M Inspections

- **Provision C.3.h of the MRP requires agencies to conduct inspections to verify operation & maintenance (O&M) of:**
 - Pervious pavement systems $\geq 3,000$ sf
 - Stormwater treatment measures
 - Hydromodification management measures
- **Applies to measures associated with a Regulated Development Project**

Pervious Pavement

- Interlocking pavers, permeable asphalt, pervious concrete, or grid pavers



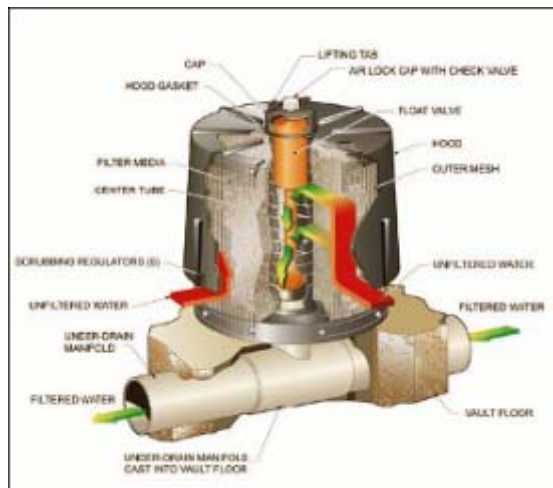
Stormwater Treatment Measures

- Low impact development (LID) treatment systems (biotreatment, infiltration, rainwater harvesting systems)

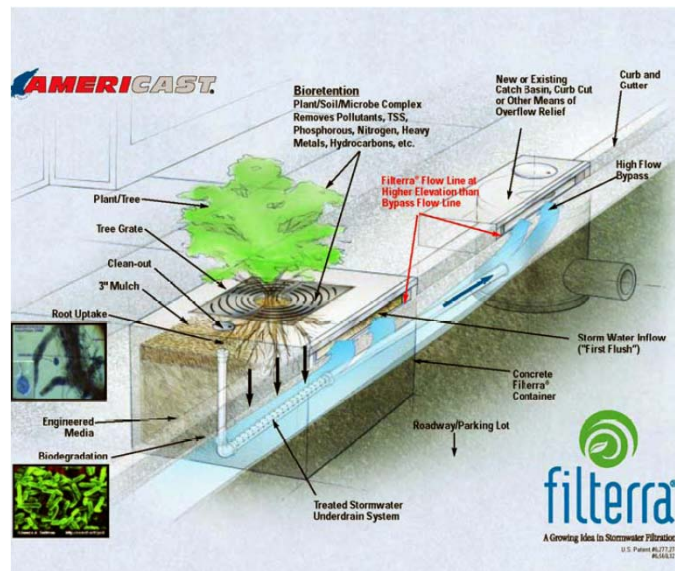


Stormwater Treatment Measures

- Vault-based systems (hydrodynamic separators, media filters, proprietary tree well filters)



Media Filter Cartridge



Hydrodynamic Separator

Hydromodification Management (HM) Facilities

- Basin, tank, pipe, or vault with specially designed outlet to slowly release water.



O&M Verification Program

- **Require facility owners to conduct ongoing maintenance (e.g., maintenance agreement)**
- **O&M Verification Inspection Plan**
 - Written Plan for installation and annual inspections
 - Applies to public (municipal) and private sites
 - Update with new requirements
- **Conduct inspections**

O&M Verification Program

- **Enforcement Response Plan (ERP)**
 - Guidance for inspectors to take consistent actions to bring sites into compliance
 - Certify completed by July 1, 2017 in upcoming Annual Report
- **Track and Report on inspections**
 - Database/Electronic Table
 - Annual Report
- **Coordinate with County Mosquito and Vector Control District**

O&M Verification Inspection Plan

- **Update to include pervious pavement as of July 1, 2016**
 - $\geq 3,000$ sq.ft.
 - Excludes private patios
 - Allows inspection of “representative no.” of pervious driveways in subdivisions
- **Updated to include procedure for 3rd party inspection of vault-based treatment systems**

O&M Verification Inspection Plan

- **Installation Inspections (beginning 7/1/16):**
 - Initial inspection of stormwater controls required “at the completion of installation”
 - Replaces requirement to inspect within 45 days of installation

O&M Verification Inspection Plan

- **O&M Inspections (beginning 7/1/16):**
 - Inspect an average of 20% of Regulated Project sites per year (minimum 15%)
 - Inspect all Regulated Projects at least once every five years
 - 3rd party vault inspections must be completed annually
 - Collect inspection records

O&M Enforcement Response Plan (ERP)

- **ERP by 7/1/17**
- **Guidance for inspectors to take consistent actions to bring sites into compliance**
 - Identify enforcement tools
 - Roles and responsibilities of staff
 - Time period for implementing corrective actions
- **Corrective actions must be implemented within 30 days of inspection**
 - Actions can be temporary and more time allowed for permanent corrections (with explanation)

Tracking & Reporting Requirements

- **O&M Verification Inspection Checklist**
- **Database/Electronic Table**
 - Can be requested by Regional Board at any time
 - Track stormwater treatment systems and HM controls installed and inspected
 - Updated to include tracking pervious pavement as of July 1, 2016
 - Updated to include tracking 3rd party vault inspections

Tracking & Reporting Requirements

- **Annual Report Inspection Summary**
 - Inspection tracked by Regulated Project sites
NOT treatment systems/HM controls/pervious pavement

FY 15/16 AR Inspections

	Regulated Projects FY 14-15	Regulated Projects FY 15-16	O&M inspections FY 15-16
San Mateo County	24	31	6
Atherton	4	4	1
Belmont	4	4	4
Brisbane	2	2	1
Burlingame	6	8	5
Colma	5	5	3
Daly City	9	9	2
East Palo Alto	10	12	2
Foster City	4	6	6
Half Moon Bay	3	3	1
Hillsborough	1	2	2
Menlo Park	62	63	13
Pacifica	1	1	1
Redwood City	47	60	12
San Bruno	6	6	2
San Mateo	18	21	4
South San Francisco	88	91	21
Woodside	0	0	0

One agency reported number of treatment systems

FY 15/16 Inspection Findings

- Inconsistent annual report submittal
- Media filter slide gate repaired
- Debris/litter
- Erosion or rills forming in bioretention areas near curb cuts require additional energy dissipaters (cobbles)
- Locating the appropriate contact responsible for treatment system maintenance is issue

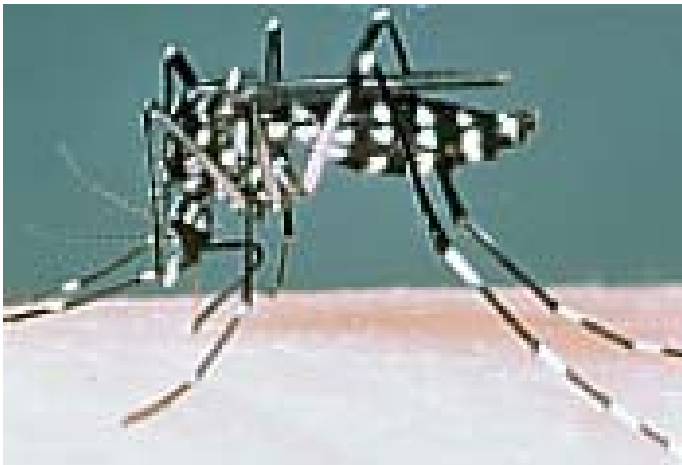
FY 15/16 Inspection Findings

- Drains in flow-through planters & bioretention areas lacked rock transitions that would help reduce the amount of mulch entering each drain
- Reduced irrigation due to drought conditions leads to inadequate, missing and invasive/nuisance vegetation

Vector Control District Coordination

- **List of newly-installed facilities must be submitted each year:**

- To the County Mosquito and Vector Control District and Regional Water Board
- Submitted before October 1



- **Countywide Program can make the submittal based on info in your Annual Report**

For More Information...

- **SMCWPPP New Development Webpage:**
<http://www.flowstobay.org/privatend>
 - O&M Verification Inspection Checklist
 - Operation and Maintenance Verification Inspection Plan Template
 - Maintenance Agreement
 - Coming soon.... ERP guidance

Questions?

Kristin Kerr

(510) 832-2852 x122

kakerr@eoainc.com

Peter Schultze-Allen

(510) 832-2852 x128

pschultze-allen@eoainc.com