

# C.6 Group Exercise

---



# Group Exercise #1

---

CONSTRUCTION BMP PLACEMENT FOR A MEDIUM  
DENSITY RESIDENTIAL REDEVELOPMENT PROJECT



# Project Background

---

Second phase of housing development

Size: 2.3 Acres

Description: 8 townhouse buildings – 42 units

New private streets to be constructed

2 existing storm drains

11 new storm drains proposed

Project length: 2 years

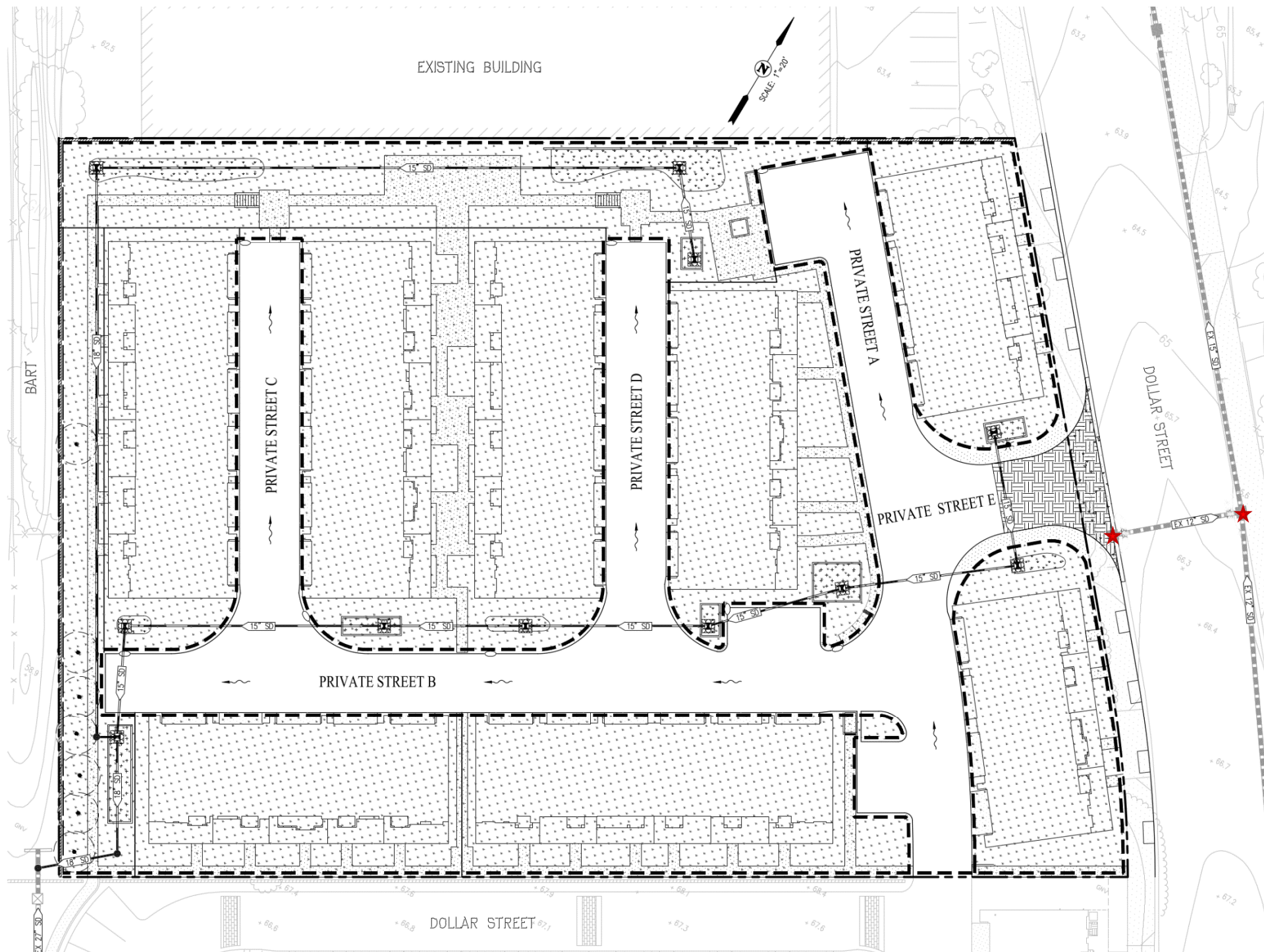












# Things to Consider

---

Construction Entrances

Good Housekeeping

Sediment Controls

Erosion Controls

Material and Equipment Storage

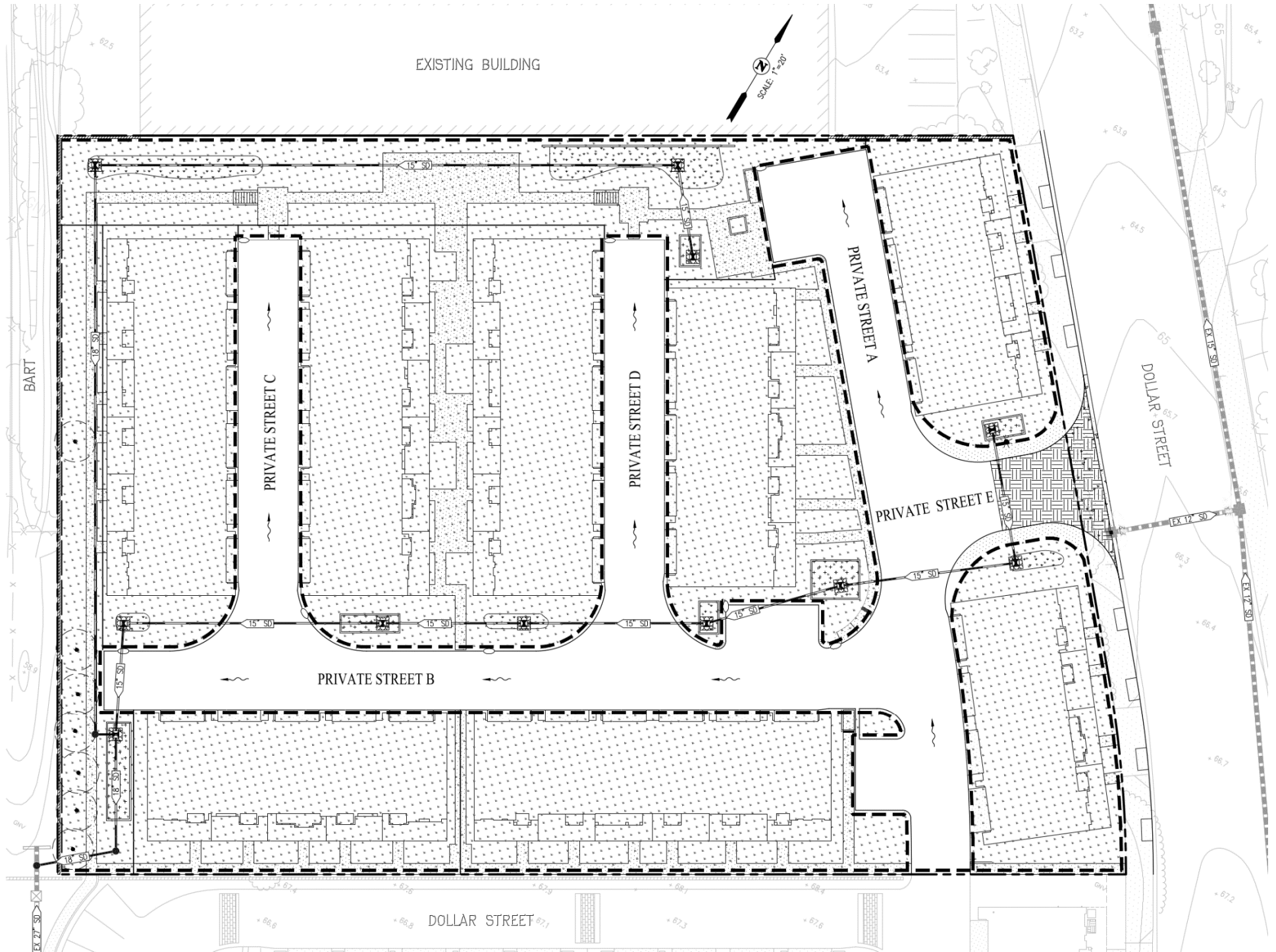
Vehicle Cleaning/Maintenance Area

Sanitary Facilities

Concrete/Waste Washouts











## LEGEND

- DIRECTION OF FLOW WITH STORM DRAIN INSTALLED
- FIELD INLET PROTECTION - (SE-10)
- CURB INLET PROTECTION - (SE-10)
- SILT FENCE - (SE-1)
- FIBER ROLL - (SE-5)
- HYDROSEED MIX OR HYDROMULCH - (EC-4 OR EC-3)
- STABILIZED CONSTRUCTION ENTRANCE/EXIT - (TC-1)
- CHECK DAMS - (SE-4)
- FIELD INLET
- CURB CUT
- PROPOSED STORM DRAIN
- EXISTING STORM DRAIN
- STORMWATER DISCHARGE SAMPLING LOCATION\*

### NOTE:

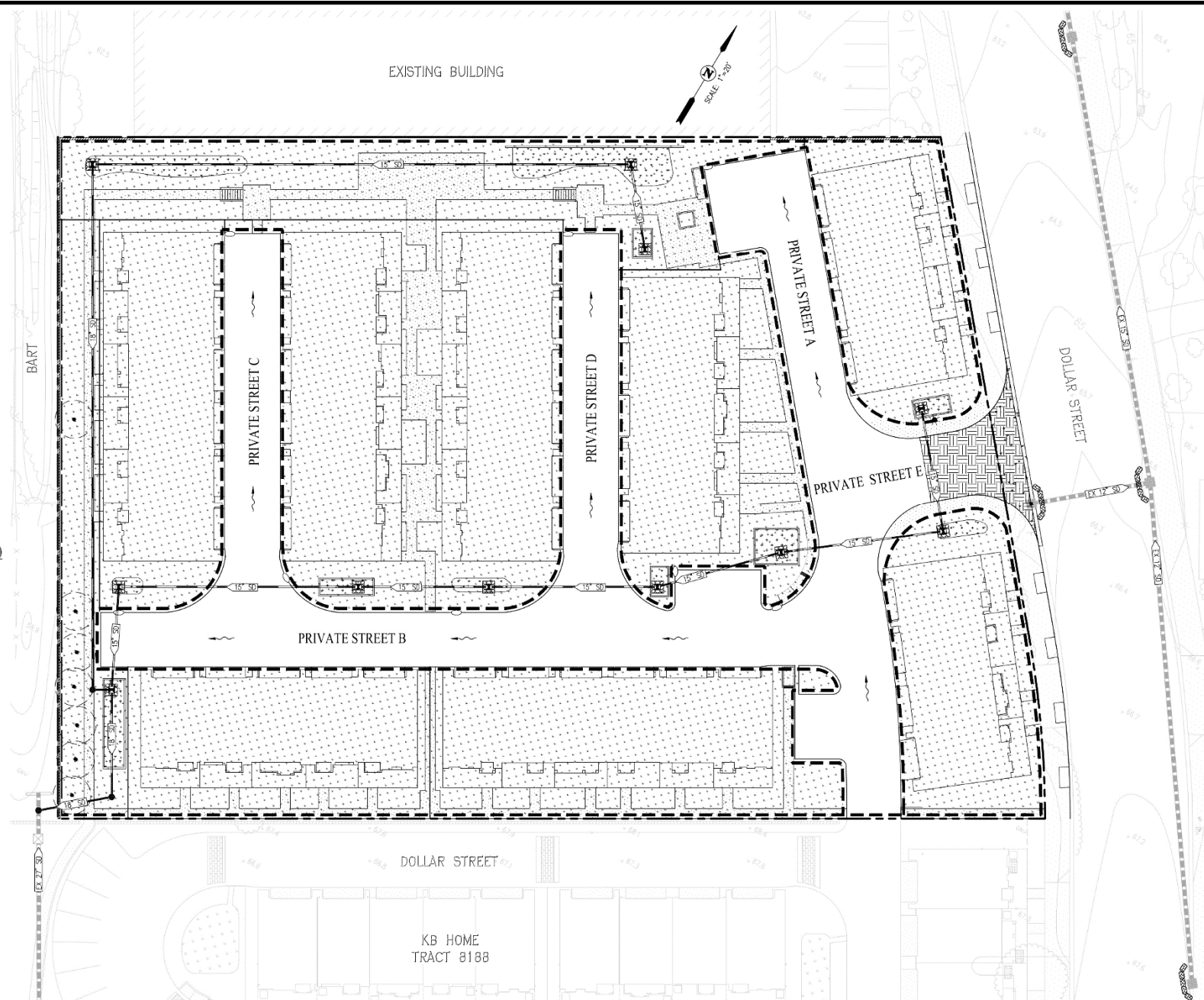
- \* STORMWATER DISCHARGE SAMPLING LOCATIONS ARE SUBJECT TO CHANGE AND WILL BE REMOVED, RELOCATED OR ADDED AT THE QSP'S DISCRETION.

## QUALIFIED SWPPP PRACTITIONER (QSP) MARK KNOWN LOCATIONS\*



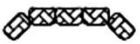


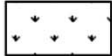

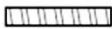



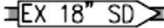

- MATERIALS AND EQUIPMENT STORAGE AREA (WM-1)
- VEHICLE CLEANING/MAINTENANCE/FUELING AREA - (NS-8, NS-9, NS-10)
- SANITARY FACILITY (WM-9)
- CONCRETE/WASTE WASHOUT (WM-8)

### NOTE:

- \* THE MATERIALS AND EQUIPMENT STORAGE AREA, VEHICLE CLEANING/MAINTENANCE/FUELING AREA, SANITARY FACILITY AND CONCRETE/WASTE WASHOUT WILL BE PLACED AT THE QSP'S DISCRETION AND ARE SUBJECT TO CHANGE.



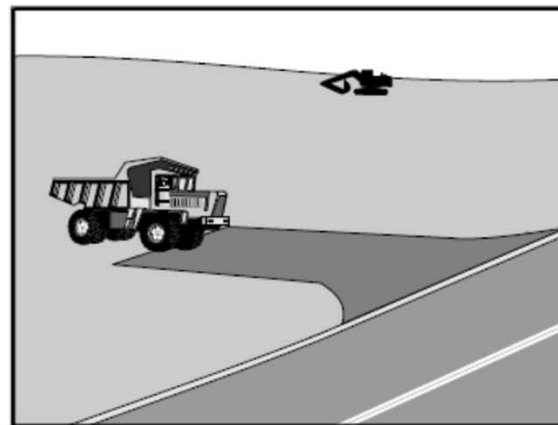
## LEGEND

	DIRECTION OF FLOW WITH STORM DRAIN INSTALLED
	FIELD INLET PROTECTION – (SE-10)
	CURB INLET PROTECTION – (SE-10)
	SILT FENCE – (SE-1)
	FIBER ROLL – (SE-5)
	HYDROSEED MIX OR HYDROMULCH – (EC-4 OR EC-3)
	STABILIZED CONSTRUCTION ENTRANCE/EXIT – (TC-1)
	CHECK DAMS – (SE-4)
	FIELD INLET
	CURB CUT
	PROPOSED STORM DRAIN
	EXISTING STORM DRAIN
	STORMWATER DISCHARGE SAMPLING LOCATION*

### NOTE:

- \* STORMWATER DISCHARGE SAMPLING LOCATIONS ARE SUBJECT TO CHANGE AND WILL BE REMOVED, RELOCATED OR ADDED AT THE QSP'S DISCRETION.

## Stabilized Construction Entrance/Exit TC-1



### Description and Purpose

A stabilized construction access is defined by a point of entrance/exit to a construction site that is stabilized to reduce the tracking of mud and dirt onto public roads by construction vehicles.

### Suitable Applications

Use at construction sites:

- Where dirt or mud can be tracked onto public roads.
- Adjacent to water bodies.
- Where poor soils are encountered.
- Where dust is a problem during dry weather conditions.

### Limitations

- Entrances and exits require periodic top dressing with additional stones.
- This BMP should be used in conjunction with street sweeping on adjacent public right of way.
- Entrances and exits should be constructed on level ground only.
- Stabilized construction entrances are rather expensive to construct and when a wash rack is included, a sediment trap of some kind must also be provided to collect wash water

### Categories

<b>EC</b>	Erosion Control	<input checked="" type="checkbox"/>
<b>SE</b>	Sediment Control	<input checked="" type="checkbox"/>
<b>TC</b>	Tracking Control	<input checked="" type="checkbox"/>
<b>WE</b>	Wind Erosion Control	
<b>NS</b>	Non-Stormwater Management Control	
<b>WM</b>	Waste Management and Materials Pollution Control	

### Legend:

- ☒ Primary Objective  
☒ Secondary Objective

### Targeted Constituents

Sediment	<input checked="" type="checkbox"/>
Nutrients	
Trash	
Metals	
Bacteria	
Oil and Grease	
Organics	

### Potential Alternatives

None

