

# SMCWPPP Pesticide Tracking Spreadsheet

May 15, 2018

Courtney Siu, P.E.

[csiu@eoainc.com](mailto:csiu@eoainc.com)  
(510) 832-2852 x 112

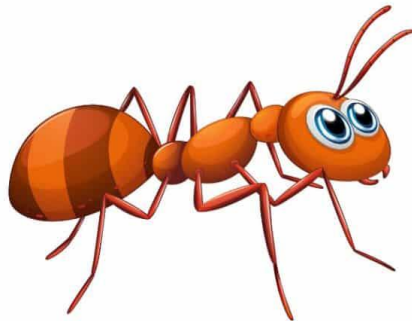
# Outline

- **Purpose & Background**
- **Pesticides of Concern**
- **Spreadsheet Structure & Steps**
- **Annual Report**
- **Group Exercise**

# Purpose & Background

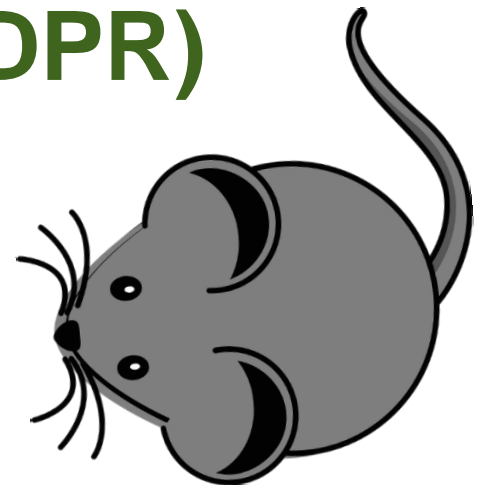
## ■ MRP Provision C.9.a.iii

- Permittees required to report in their Annual Reports:
  - Trends in quantities and types of pesticide active ingredients used
  - IPM tactics or strategies implemented in the reporting year



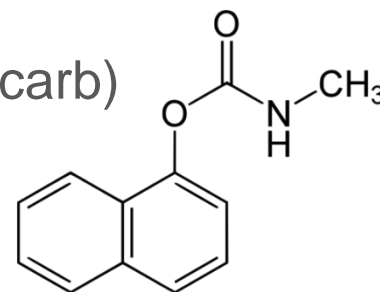
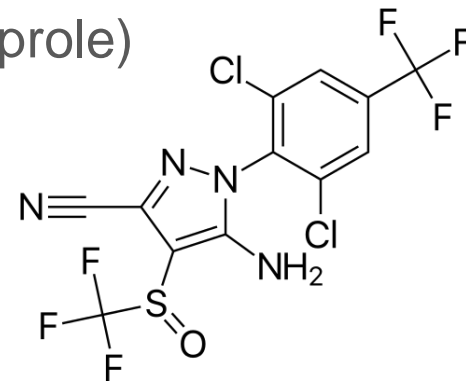
# Purpose & Background

- **Developed July 2017**
  - Public Works Municipal Maintenance
  - Parks Maintenance/Integrated Pest Management
- **Pesticide List from Dept of Pesticide Regulation (DPR)**
- **Updated annually**



# Pesticides of Concern

- **Diamides** (chlorantraniliprole and cyantraniliprole)
- **Diuron**
- ★ **Fipronil** and its degradates
- ★ **Indoxacarb**
- **Organophosphorous insecticides** (chlorpyrifos, diazinon, and malathion)
- ★ **Pyrethroids** (metofluthrin, bifenthrin, cyfluthrin, beta-cyfluthrin, cypermethrin, deltamethrin, esfenvalerate, lambdacyhalothrin, and permethrin)
- **Carbamates** (e.g., carbaryl and aldicarb)



# Spreadsheet Structure & Steps

A		B	C	D
1	<b>SMCWPPP Pesticide Product Application Tracking Sheet</b>			
2	<b>Last Updated</b>			
3	7/3/2017 Updated DPR LookupList & DuplicateNames			
4	7/14/2017 Fixed ProductList Formulas			
5				
6	<b>Tab</b>	<b>Description</b>		
7	Tracking	Data entry sheet for pesticide applicators		
8	ProductList	List of all pesticide products currently applied by City staff and contractors		
9		Subset of the DPR list copied and pasted by City Staff		
10		Automatically calculates the total amount of product used from the Tracking tab		
11	Summary	Total amount of each pesticide (active ingredient) used by units		
12		The MRP pesticides of concern are listed. Add additional active ingredients to the list as needed.		
13	LookupLists	Add agency specific values to the drop down lists for applicator, location, targeted pests and IPM tactics.		
14		These drop down lists appear on the Tracking tab.		
15	DPR_LookupList	Complete list of active products registered with DPR or that expired after 7/1/2015 (queried from DPR database July 2017)		
16		DO NOT resort the table. Sorting may change variables on other sheets		
17		The DPR product database is available at		
18		<a href="http://www.cdpr.ca.gov/docs/label/m4.htm">http://www.cdpr.ca.gov/docs/label/m4.htm</a>		
19	DuplicateNames	List of product names associated with more than one EPA registration number		
20	Dilution	Worksheet to calculate product used if applicator reports diluted product usage		
21				
22				
23	<b>Step 1</b>			
24	From the <b>DPR_LookupList</b> , find the name(s) of the products that are used in your municipality by staff or contractors.			
25	Confirm each product's EPA registration number in the table with the number on the product's packaging			
26	Check for duplicate product names on the <b>DuplicateNames</b> sheet			
27	Copy each Product Name and EPA Registration Number (from Columns A and B of the <b>DPR_LookupList</b> )			
28	Paste each Product Name and EPA Registration Number into Columns A and B of the <b>ProductList</b>			
29	Up to three active ingredients will autopopulate the table.			
30	If a product contains an MRP tracked pesticide, it will appear as the first active ingredient			
31	Active ingredients that are not tracked by the MRP are ordered by their percentage (largest % first)			
32				
33	<b>Step 2</b>			
34	Add applicable values to the <b>LookupLists</b> sheet.			
35	Lists are for City Staff/Contractor (applicator) name, Application Location, Targeted Pest(s), and IPM tactics utilized			
36				
37	<b>Step 3</b>			
38	Fill in applicable fields on the <b>Tracking</b> sheet			
39	The EPA registration number will autopopulate and does not need to be completed			
40	Several fields are pull-down lists ensure consistency:			
41	The <b>Name of Product Applied</b> is a pull-down list from the <b>ProductList</b> tab			
42	The <b>Applicator</b> , <b>Application Location</b> , <b>Targeted Pest(s)</b> , and <b>IPM tactics</b> are pull-down lists from the <b>LookupLists</b> tab			
43	The amount of product used may be entered as fluid ounces, ounces, gallons, milligrams, or pounds			
44	If packets are used, multiply the weight/volume on the package by the number of packages used			
45	If the applicator diluted the product for application, only enter the amount of product used			
46	(use the <b>Dilution</b> sheet if needed to determine how much of the actual product was used)			
47				
48	<b>Step 4</b>			
49	The <b>ProductList</b> sheet will automatically calculate the total amount of each product used			
50	The <b>Summary</b> sheet will automatically calculate the total amount of each pesticide used for the listed MRP pesticides of concern			
51	To track active ingredients that are not MRP pesticides of concern			
52	Copy the names of the active ingredients from the <b>ProductList</b> tab			
53	Paste the names on the <b>Summary</b> sheet in the Active Ingredients column			
54				

# Spreadsheet Structure & Steps

- **Tracking**
- **ProductList**
- **Summary**
- **LookupLists**
- **DPR\_LookupList**
- **DuplicateNames**
- **Dilution**



# Tracking Spreadsheet Steps



SHAKE WELL BEFORE USING (AGITE BIEN ANTES DE USAR)

**STOP** READ ENTIRE LABEL BEFORE USE

**DIRECTIONS FOR USE**  
It is a violation of Federal law to use this product in a manner inconsistent with its labeling. **SHAKE WELL BEFORE USING.** Read use carefully. Test inconspicuous sample of fabric or rug for staining before use. For residential use only.  
Avoid contamination of food and drinking water. All food preparation surfaces and utensils should be covered during treatment or thoroughly washed before use. Remove pets and cover aquariums before spraying. Do not use on or near people or pets to contact treated surfaces until spray has dried. Stand spray away from people, pets and plants. Do not use as a room spray.

**INDOOR**  
TO CONTROL BLACK WIDOW, BROWN RECLUSE, WOLF SPIEDERS, SCORPIONS, ANTS, COCKROACHES, SILVERFISH, CRICKETS, SOMBRUS, FREIGHTS AND OTHER COMMON HOUSEHOLD PESTS:  
1. Contact as many insects as possible with the spray in addition to thoroughly treating all parts of the room where these pests may hide. Spray spiders and their webs directly.  
2. Pay special attention to cracks, dark corners, hidden surfaces under sinks, behind drapes and refrigerators. Treat storage areas and whenever these pests are suspected.  
3. To kill spiders and prevent them from entering your home, spray around door and window frames, inside and outside. Spray upward to treat active spiderwebs. Do not remove spiderwebs and eggs until spray has dried.  
4. For scorpions, stand at a safe distance and completely cover the pests. Scorpions must be contacted by the spray to be killed.  
5. To kill ants, treat doors, around window frames, ant trails and other areas of entry.

**OUTDOOR**  
Do not water the treated area to the point of runoff. Do not make applications during rain. All outdoor applications must be limited to spot or crack-and-crevice treatments only, except for the following permitted uses: Treatment to soil or vegetation around structures; applications to lawns, turf and other vegetation.  
All outdoor applications to impervious surfaces such as sidewalks, driveways, patios, porches and structural surfaces (such as windows, doors and eaves) are limited to spot and crack-and-crevice applications only.  
Application is prohibited directly into sewers or drains, or to any area like where drainage to sewers, storm drains, water bodies or aquatic habitat can occur. Do not allow the product to enter any drain during or after application.  
**TO KILL BLACK WIDOW, WOLF, BROWN RECLUSE SPIDERS, SCORPIONS, ANTS, CRICKETS, COCKROACHES AND OTHERS:**  
1. Thoroughly spray infested weeds or bushy non-crop areas.  
2. For scorpions, carefully remove accumulated firewood, lumber and other materials where scorpions like to hide (be sure to wear work gloves). Treat directly and next to the infested areas. When directly treating scorpions, do not spray to be killed.  
3. To kill ants, thoroughly wet hills and mounds.

**STORAGE AND DISPOSAL**  
Store in cool, dry area away from heat or open flame. Do not puncture or incinerate! If empty: Place in trash or other for recycling only available. If partly filled: Call your local solid waste agency for disposal instructions.

**PRECAUTIONARY STATEMENTS**  
**Hazards to Humans and Domestic Animals**  
**CAUTION.** Avoid contact with skin or clothing. Wash thoroughly with soap and water after handling and before eating, drinking, chewing gum or using tobacco.  
**First Aid - If Swallowed:** Immediately call a Poison Control Center or doctor. Do not induce vomiting unless told to do so by a Poison Control Center or doctor. Do not get any liquid to the person and give anything by mouth to an unconscious person.  
**If on Skin or Clothing:** Wash immediately with plenty of water for 15 minutes. Remove contaminated clothing. These skin immediately with water. Call a Poison Control Center or doctor for treatment.  
**If in Eyes:** Flush eyes with water for 15 minutes. Call a Poison Control Center or doctor for treatment.  
**Environmental Hazards - This product is toxic to fish. Do not apply directly to water.**  
**Physical and Chemical Hazards**  
Contains irritants. Do not use on or store near heat or open flame. Do not puncture or incinerate. Scorpions to temperatures above 150°F cause heat-banding.  
Use in the extent consistent with applicable law, buyer assumes all liability for safety and use not in accordance with directions.  
Questions or Comments? Call 1-800-877-5431 or visit our website at www.hotshot.com

**ALTO** LEA TODA LA ETIQUETA ANTES DE USAR

**MODO DE EMPLEO**  
Se consideran una violación a la ley federal usar este producto de una manera inconsistente con su etiquetado. **AGITE BIEN ANTES DE USAR.** Pruebe una muestra inconspicua de tela o alfombra antes de usar. Solo para uso residencial.  
Evite la contaminación de alimentos y agua potable. Todas las superficies de preparación de alimentos y utensilios deben estar cubiertas durante el tratamiento o lavadas completamente antes de usar. Retire las mascotas y cubra los acuarios antes de usar. No use sobre o cerca de personas o mascotas que puedan entrar en contacto con las superficies tratadas hasta que el rocío se haya secado. No use como un aerosol para ambientes.  
**EN ESPACIOS INTERIORES**  
PARA CONTROLAR ARÁCNIDOS VIOLINEROS, ARÁCNIDOS LANCEROS, COCINEROS, ESCORPIONES, ANTS, CRICKETS, COCINEROS, SOMBRUS, FREIGHTS Y OTROS PESTES COMUNES DEL HOGAR:  
1. Rocíe la mayor cantidad posible de insectos al mismo tiempo que trata todas las partes de la habitación donde estos pueden esconderse. Rocíe directamente a los arácnidos y sus telas.  
2. Preste especial atención a las grietas, los rincones oscuros, debajo de los muebles, detrás de las cortinas y en los frentes de los refrigeradores.  
3. Para matar a los arácnidos que entran en su hogar, rocíe el interior y el exterior de los marcos de las puertas y las ventanas.  
4. Para los escorpiones, manténgase a una distancia segura y cubra completamente a los escorpiones con el producto.  
5. Para matar a las hormigas, rocíe los montículos y las rutas de las hormigas.  
**ESPACIOS EXTERIORES**  
No riegue las áreas tratadas hasta el punto de escorrentía. No aplique durante la lluvia. Todas las aplicaciones al aire libre deben limitarse a aplicaciones puntuales o en las grietas y juntas. Excepto para los usos permitidos a continuación, todas las aplicaciones en superficies exteriores como aceras, caminos, patios, porches y superficies estructurales (como ventanas, puertas y marcos de las puertas) están limitadas a aplicaciones puntuales o en las grietas y juntas.  
No permita que el producto entre en alcantarillas o drenajes. No permita que el producto entre en alcantarillas o drenajes.  
**PARA MATAR ARÁCNIDOS VIOLINEROS, ARÁCNIDOS LANCEROS, COCINEROS, ESCORPIONES, ANTS, CRICKETS, COCINEROS, SOMBRUS, FREIGHTS Y OTROS PESTES COMUNES DEL HOGAR:**  
1. Rocíe completamente las malezas y las plantas no cosechables.  
2. Para los escorpiones, retire cuidadosamente la leña, el material de construcción y otros materiales donde los escorpiones les gusta esconderse. Rocíe directamente y al lado de las áreas infestadas. Cuando rocíe directamente a los escorpiones, no rocíe para matarlos.  
3. Para matar a las hormigas, rocíe completamente los montículos y las rutas de las hormigas.  
**ALMACENAMIENTO Y DISPOSICIÓN**  
Guarde en un lugar fresco y seco, lejos del calor o del fuego. No puncure ni incinerate! Si está vacío: Coloque en un contenedor de residuos o en un contenedor de reciclaje si está disponible. Si está parcialmente lleno: Llame a su agencia local de residuos sólidos para obtener instrucciones.  
**PRECAUCIONES** Evite el contacto con la piel, los ojos o la ropa. Evite el contacto con la piel, los ojos o la ropa después de manipular y antes de comer, beber, fumar o usar productos de higiene personal.  
**Primeros Auxilios** • Si se tragó: Llame inmediatamente a un centro de control de toxicología o a un médico. No induzca el vómito a menos que así lo indique un centro de control de toxicología o un médico. No administre nada de líquido a la persona. No administre nada por boca a una persona que haya perdido el conocimiento.  
Si está en contacto con la piel o la ropa: Quítela la ropa contaminada. Lave inmediatamente la piel con abundante agua durante 15 a 20 minutos. Lave a un centro de control de toxicología o a un médico para recibir instrucciones de tratamiento. • Cuando toque a un centro de control de toxicología o a un médico, informe el nombre del producto, los síntomas que causa y la cantidad de producto.  
Nota para el médico: Contiene distribuidores de pesticidas, los síntomas pueden causar náuseas por aspersión.  
**Riesgos para el medio ambiente** • Este producto es tóxico para los peces. No lo vierte directamente al agua.  
**Riesgos Físicos o Químicos** • Contiene gas a presión. No lo use en un punto ciego de una fuente de calor o de una fuente de ignición. Evite la exposición a temperaturas superiores a 150°F para evitar el calentamiento.  
NOTA: Respecto al grado que sea compatible con la legislación pertinente, el comprador asume toda la responsabilidad por seguridad y uso que no esté de acuerdo con las instrucciones.  
¿Preguntas o comentarios? Llame al 1-800-877-5431.

with the product for any reason, send your written request for a refund to the address listed above receipt showing the price you paid. Please allow 6-8 weeks for processing.

Distributed by Spectrum Group  
Division of United Industries Corporation  
PO Box 142642, St. Louis, MO 63114-0642  
EPA Reg. No. 9688-253-8845  
EPA Est. Nos. 9688-MO-1(U), 3657-WI-2(BU), 58996-MO-1(AE), 11623-GA-1(CK), 11623-GA-3(CN)  
Circled letter is first letter of lot number. 17-15507



# Spreadsheet Structure & Steps

	A	B	C	D	E	F	G	H
1	Product Name	EPA Registration #	Active Ingredient	% Active Ingredient	# Active Ingredients	Density (g/cm3)	Product Inactive Date	MRP Pesticide Category
9520	HOT SHOT ROACH & ANT KILLER 4	9688- 187-AA- 8845	LAMBDA-CYHALOTHRIN	0.01	2	8.12	12/31/2016	Pyrethroids
9521	HOT SHOT ROACH & ANT KILLER 4	9688- 187-AA- 8845	PRALLETHRIN	0.025	2	8.12	12/31/2016	
9522	HOT SHOT SPIDER & SCORPION KILLER	9688- 253-ZC- 8845	LAMBDA-CYHALOTHRIN	0.03	2	8.31		Pyrethroids
9523	HOT SHOT SPIDER & SCORPION KILLER	9688- 253-ZC- 8845	PRALLETHRIN	0.025	2	8.31		
9524	HOT SHOT SPIDER KILLER 3	9688- 253-AA- 8845	LAMBDA-CYHALOTHRIN	0.03	2	8.31	12/31/2016	Pyrethroids
9525	HOT SHOT SPIDER KILLER 3	9688- 253-AA- 8845	PRALLETHRIN	0.025	2	8.31	12/31/2016	
9526	HOT SHOT ULTRA ANT & ROACH KILLER 3	9688- 246-AA- 8845	LAMBDA-CYHALOTHRIN	0.025	2	8.35	12/31/2016	Pyrethroids
9527	HOT SHOT ULTRA ANT & ROACH KILLER 3	9688- 246-AA- 8845	IMIPROTHRIN	0.1	2	8.35	12/31/2016	
9528	HOT SHOT ULTRA CLEAR ROACH & ANT GEL BAIT	9688- 271-AA- 8845	DINOTEFURAN	0.05	1	8.59		
9529	HOT SHOT ULTRA LIQUID ANT BAIT	9688- 242-AA- 8845	DINOTEFURAN	0.05	1	9.59		
9530	HOT SHOT ULTRA LIQUID ROACH BAIT	9688- 239-AA- 8845	DINOTEFURAN	0.05	1	9.59		
9531	HOT SHOT ULTRA WASP & HORNET KILLER	9688- 228-AA- 8845	PERMETHRIN	0.375	3	6.55	12/31/2016	Pyrethroids
9532	HOT SHOT ULTRA WASP & HORNET KILLER	9688- 228-AA- 8845	PIPERONYL BUTOXIDE	0.75	3	6.55	12/31/2016	
9533	HOT SHOT ULTRA WASP & HORNET KILLER	9688- 228-AA- 8845	TETRAMETHRIN	0.15	3	6.55	12/31/2016	
9534	HOT SHOT WASP & HORNET KILLER 3	9688- 190-AA- 8845	LAMBDA-CYHALOTHRIN	0.01	2	8.12		Pyrethroids
9535	HOT SHOT WASP & HORNET KILLER 3	9688- 190-AA- 8845	PRALLETHRIN	0.025	2	8.12		
9536	HOUSE GUARDIAN INSECT SPRAY	67702- 14-AA- 56872	CANOLA OIL	1	2	8.211		
9537	HOUSE GUARDIAN INSECT SPRAY	67702- 14-AA- 56872	PYRETHRINS	0.3	2	8.211		
9538	HOUSEHOLD INSECT CONTROL READY TO USE	4- 440-ZA	DELTAMETHRIN	0.02	1	8.26		Pyrethroids
9539	HOUSEHOLD ROOM FOGGER	4- 428-ZA	PERMETHRIN	0.25	3	8.11		Pyrethroids
9540	HOUSEHOLD ROOM FOGGER	4- 428-ZA	PIPERONYL BUTOXIDE	0.5	3	8.11		
9541	HOUSEHOLD ROOM FOGGER	4- 428-ZA	TETRAMETHRIN	0.1	3	8.11		
9542	HOUSEPLANT INSECT SPRAY	1021- 1715-ZB- 54705	PERMETHRIN	0.2	2	8.36		Pyrethroids
9543	HOUSEPLANT INSECT SPRAY	1021- 1715-ZB- 54705	TETRAMETHRIN	0.2	2	8.36		
9544	HOWARD JOHNSON'S 0.2% MALLET PLUS	228- 500-AA- 32802	IMIDACLOPRID	0.2	1	0		
9545	HOWARD JOHNSON'S CRABGRASS CONTROL PLUS WITH 0.37% PRODIAMINE	32802- 66-ZA	PRODIAMINE	0.37	1	0		
9546	HOWARD JOHNSON'S PERMETHRIN 25G	53883- 39-AA- 32802	PERMETHRIN	0.25	1	0		Pyrethroids
9547	HOWARD JOHNSON'S PREVENTS CRABGRASS PLUS WITH 0.172% DIMENSION	32802- 69-ZC	DITHIOPYR	0.172	1	0		
9548	HOWARD JOHNSON'S PREVENTS CRABGRASS PLUS WITH 0.172% DITHIOPYR	32802- 69-ZD	DITHIOPYR	0.172	1	0		
9549	HOWARD JOHNSON'S VIPER WEED & FEED	228- 413-AA- 32802	2,4-D, ISOOCYL ESTER	1.077	4	0		
9550	HOWARD JOHNSON'S VIPER WEED & FEED	228- 413-AA- 32802	MECOPROP-P	0.287	4	0		
9551	HOWARD JOHNSON'S VIPER WEED & FEED	228- 413-AA- 32802	2,4-D	0.146	4	0		
9552	HOWARD JOHNSON'S VIPER WEED & FEED	228- 413-AA- 32802	DICAMBA	0.07	4	0		
9553	HP AM27	72372- 4-AA- 56601	HYDROGEN PEROXIDE	27	1	9.18		
9554	HP AM27	72372- 4-AA- 748	HYDROGEN PEROXIDE	27	1	8.749	12/31/2015	
9555	HP PM 50	83968- 2-AA	HYDROGEN PEROXIDE	50	1	9.92	12/31/2015	
9556	HP PM 70	83968- 1-AA	HYDROGEN PEROXIDE	70	1	10.75	12/31/2015	
9557	HSI SODIUM HYPOCHLORITE SOLUTION (12.5%)	81456- 1-AA	SODIUM HYPOCHLORITE	12.5	1	9.26		
9558	HTH 1" CHLORINATING TABLETS	1258- 1278-ZA	TRICHLORO-S-TRIAZINETRIONE	92.4	1	0		

# Spreadsheet Structure & Steps

	A	B	C	D	E	F	G	H	I	J	K	L	M	N	O	P	Q	R	S	T	U	
1																						
2		City of																				
3		List of Pesticide Products																				
4																						
5			Total Product Used					Active Ingredient 1							Active Ingredient 2							
6		Product Name	EPA Registration #	fl oz	oz	gal	mg	lbs	Name	%	fl oz	oz	gal	mg	lbs	Name	%	fl oz	oz	gal	mg	lbs
7		HOT SHOT SPIDER & SCORPION KILLER	9688- 253-ZC- 8845	0	0	0	0	0	LAMBDA-CYHALOTHR	0.03	0	0	0	0	0	PRALLETHRIN	0.025	0	0	0	0	0
8																						
9																						
10																						
11																						
12																						
13																						
14																						
15																						
16																						
17																						
18																						
19																						
20																						
21																						
22																						
23																						
24																						
25																						
26																						
27																						
28																						
29																						
30																						
31																						
32																						
33																						
34																						
35																						
36																						
37																						
38																						
39																						
40																						
41																						

MetadataTrackingProductListSummaryLookupListsDPR\_LookupListDuplicateNamesDilution

Count: 2

100%

# Spreadsheet Structure & Steps

	A	B	C	D	E	F	G	H	I
1	City Staff/Contractor	Location			Target Pest(s)	IPM Tactics			
2	Larry	Fire Station #1			Beetles	Wood chip			
3	Moe	Fire Station #2			Aphids	Line trim			
4	Curly	Public Library #1			Rats	Mulch			
5		Public Library #2			Scorpions	Hand pull			
6		City Hall							
7		Inside Bldg							
8		Park #1							
9									
10									
11									
12									
13									
14									
15									
16									
17									
18									
19									
20									
21									
22									
23									
24									
25									
26									
27									
28									

Ready


Metadata Tracking ProductList Summary LookupLists DPR\_LookupList DuplicateNames Dilution

100%

# Spreadsheet Structure & Steps

	A	B	C	D	E	
1						
2	<b>City of</b>					
3	<b>Pesticide Products Tracking Sheet</b>					
4						
5	<b>Date of</b>	<b>Applicator</b>	<b>Location of</b>	<b>Area (Acres or units)</b>	<b>Name of Product Applied</b>	<b>EPA R</b>
6	<b>Application</b>	<b>(City Staff/Contractor)</b>	<b>Application</b>	<b>Treated</b>		
7	5/17/2018	Moe	City Hall		HOT SPIDER & SCORPION KILLER	
8						
9						
10						
11						
12						
13						
14						
15						
16						
17						
18						
19						
20						
21						
22						
23						
24						
25						
26						
27						
28						
29						
30						
31						
32						
33						
34						

Pull-down menu



SAN MATEO COUNTYWIDE  
Water Pollution  
Prevention Program

Metadata
 Tracking
 ProductList
 Summary
 LookupLists
 DPR\_LookupList
 DuplicateNames
 Dilution
 +

# Spreadsheet Structure & Steps

	E	F	G	H	I	J	K	L	M	N	O
1											
2											
3											
4			<i>If "Yes" refer to Dilution tab</i>								
	Name of Product Applied	EPA Registration #	Dilution?	Total Product Used					Target Pest(s)	IPM Strategies	Comments
				fl oz	oz	gal	mg	lbs			
7	HOT SHOT SPIDER & SCORPION KILLER	9688- 253-ZC- 8845		1					Scorpions	Hand pull	
8											
9											
10											
11											
12											
13											
14											
15											
16											
17											
18											
19											
20											
21											
22											
23											
24											

Auto-populated

Pull-down menu

Ready Metadata Tracking ProductList Summary LookupLists DPR\_LookupList DuplicateNames Dilution + 100%

# Spreadsheet Structure & Steps

[illegible]

# Spreadsheet Structure & Steps

	A	B	C	S	T	U	V	W	X	Y
1										
2		City of								
3		Pesticide Totals								
4										
5		MRP Tracked Category	Active Ingredient	Total Used						
6				fl oz	oz	gal	mg	lbs		
7		Diamides	CHLORANTRANILIPROLE	0	0	0	0	0		
8		Diamides	CYANTRANILIPROLE	0	0	0	0	0		
9		Diuron	DIURON	0	0	0	0	0		
10		Fipronil	FIPRONIL	0	0	0	0	0		
11		Indoxacarb	INDOXACARB	0	0	0	0	0		
12		Organophosphates	DIAZINON	0	0	0	0	0		
13		Organophosphates	CHLORPYRIFOS	0	0	0	0	0		
14		Organophosphates	MALATHION	0	0	0	0	0		
15		Pyrethroids	METOFLUTHRIN	0	0	0	0	0		
16		Pyrethroids	BIFENTHRIN	0	0	0	0	0		
17		Pyrethroids	CYFLUTHRIN	0	0	0	0	0		
18		Pyrethroids	BETA-CYFLUTHRIN	0	0	0	0	0		
19		Pyrethroids	CYPERMETHRIN	0	0	0	0	0		
20		Pyrethroids	(S)-CYPERMETHRIN	0	0	0	0	0		
21		Pyrethroids	ALPHA-CYPERMETHRIN	0	0	0	0	0		
22		Pyrethroids	DELTAMETHRIN	0	0	0	0	0		
23		Pyrethroids	ESFENVALERATE	0	0	0	0	0		
24		Pyrethroids	LAMBDA-CYHALOTHRIN	0.0003	0	0	0	0		
25		Pyrethroids	PERMETHRIN	0	0	0	0	0		
26		Pyrethroids	PERMETHRIN, OTHER RELATED	0	0	0	0	0		
27		Carbamates	CARBARYL	0	0	0	0	0		
28		Carbamates	ALDICARB	0	0	0	0	0		
29			PRALLETHRIN	0.00025	0	0	0	0		
30				0	0	0	0	0		
31				0	0	0	0	0		
32				0	0	0	0	0		
33				0	0	0	0	0		
34				0	0	0	0	0		

Metadata
Tracking
ProductList
Summary
LookupLists
DPR\_LookupList
DuplicateNames
Dilution
+

Select destination and press ENTER or choose Paste

# Annual Reporting Table

FY 2016-2017 Annual Report

C.9 – Pesticides Toxicity Controls

Permittee Name: \_\_\_\_\_

## Section 9 – Provision C.9 Pesticides Toxicity Controls

### C.9.a. ► Implement IPM Policy or Ordinance

Is your municipality implementing its IPM Policy/Ordinance and Standard Operating Procedures?

☐

Yes

☐

No

If no, explain:

Report implementation of IPM BMPs by showing trends in quantities and types of pesticides used, and suggest reasons for increases in use of pesticides that threaten water quality, specifically organophosphates, pyrethroids, carbamates fipronil, indoxacarb, diuron, and diamides. A separate report can be attached as evidence of your implementation. **Starting FY 16-17, Permittees are required to report the total quantity of the active ingredient used, not the total quantity of product used.**

#### Trends in Quantities and Types of Pesticide Active Ingredients Used<sup>56</sup>

Pesticide Category and Specific Pesticide Active Ingredient Used	Amount <sup>57</sup>					
	FY 15-16	FY 16-17	FY 17-18	FY 18-19	FY 19-20	FY 20-21
<b>Organophosphates</b>						
Active Ingredient Chlorpyrifos						
Active Ingredient Diazinon						
Active Ingredient Malathion						
<b>Pyrethroids (see footnote #57 for list of active ingredients)</b>						
Active Ingredient Type X						
Active Ingredient Type Y						
<b>Carbamates</b>						
Active Ingredient Carbaryl						
Active Ingredient Aldicarb						
<b>Fipronil</b>						



# Annual Reporting Table

FY 2016-2017 Annual Report  
Permittee Name: \_\_\_\_\_

C.9 – Pesticides Toxicity Controls

Indoxacarb	Reporting not required in FY 15-16					
Diuron	Reporting not required in FY 15-16					
Diamides	Reporting not required in FY 15-16					
Active Ingredient <u>Chlorantraniliprole</u>						
Active Ingredient Cyantraniliprole						
<b>IPM Tactics and Strategies used:</b> <ul style="list-style-type: none"> <li><b>Guidance</b> Provide a brief description (e.g., one or two sentences) of two IPM tactics or strategies implemented in the reporting year. Do not state that your municipality is implementing its IPM policy, instead state how, with 2 examples. Some examples are provided below: <ul style="list-style-type: none"> <li>Use of non-chemical strategies such as monitoring, mowing weeds, mulching.</li> <li>Removal of plants that require frequent pesticide applications.</li> <li>Replacing invasive plants with natives.</li> <li>Preventive actions such as sealing holes and gaps in structures, improving sanitation.</li> <li>Use of baits and traps instead of broadcast pesticides</li> </ul> </li> </ul>						

□

# Group Exercise



**For control of subterranean termites:** For use by individuals/firms licensed or registered by the state to apply termiticide products. States may have more restrictive requirements regarding qualifications of persons using this product. Consult the pest control regulatory agency of your state prior to use of this product.

**For use as an insecticide on ornamentals grown in interiorscapes, for perimeter insect control on lawns, ornamental trees and shrubs around residential, institutional, public, commercial and industrial buildings, parks, recreational areas and athletic fields, treatment of preconstruction lumber and logs, and for use on buildings/structures. Treatment of preconstruction lumber and logs, and for use on buildings/structures may only be done by PCOs.**

**ACTIVE INGREDIENT:**

Permethrin* .....	36.8%
-------------------	-------

<b>OTHER INGREDIENTS**:</b> .....	63.2%
-----------------------------------	-------

<b>TOTAL:</b> .....	100.0%
---------------------	--------

\* *cis/trans* ratio: Max. 42% ( $\pm$ ) *cis* and min. 58% ( $\pm$ ) *trans*

\*\* Contains petroleum distillates.

Contains 3.2 pounds permethrin per gallon as an emulsifiable concentrate.

---

EPA Reg. No. 70506-6