

# Grazing in San Mateo County

*Presenter: Kirk Gharda*





# Grazing in SMC

## DISCUSSION GUIDE

---

My Findings

Before and After

Determine Project Type

Goat Viability

Seasonal Windows

Cost Controls

Goat Vendor Types

Goat Availability



# My Findings

## WHAT I HAVE DONE



Living Systems  
Innovative Land Management



- Identified 7 different goat vendors who had interest in grazing Redwood City parks.
- Had three conversations with the biggest goat grazer in California.
- Conducted three vendor walkthroughs of Redwood City Parks.
- Had 7 acres of Easter Bowl Park grazed, planning for hand crews to finish vegetation management work.
- Planning for 24 acres of Stulsaft Park to be cleared with grazing and hand crews.



# Before

---



## Location

Easter Bowl Park

## Grazing Timeline

11/18 - 11/29

## Project Scope

Graze the forested  
understory, 7 acres  
total.



# After

---



## 2-Step Process

Graze, then clear with hand crews.

## Timeline

Non-Grass vegetation takes 1-5 years to pop back up.

## Manual Clearance Window

0-6 months after goats leave.

## Benefits of Quick Timeline

More accurate *and* cheaper hand crew bids.





---

WHAT  
VEGETATION  
DO YOU WANT  
REMOVED?

---



# Right Tool for the Job

---

## Grasses Only:

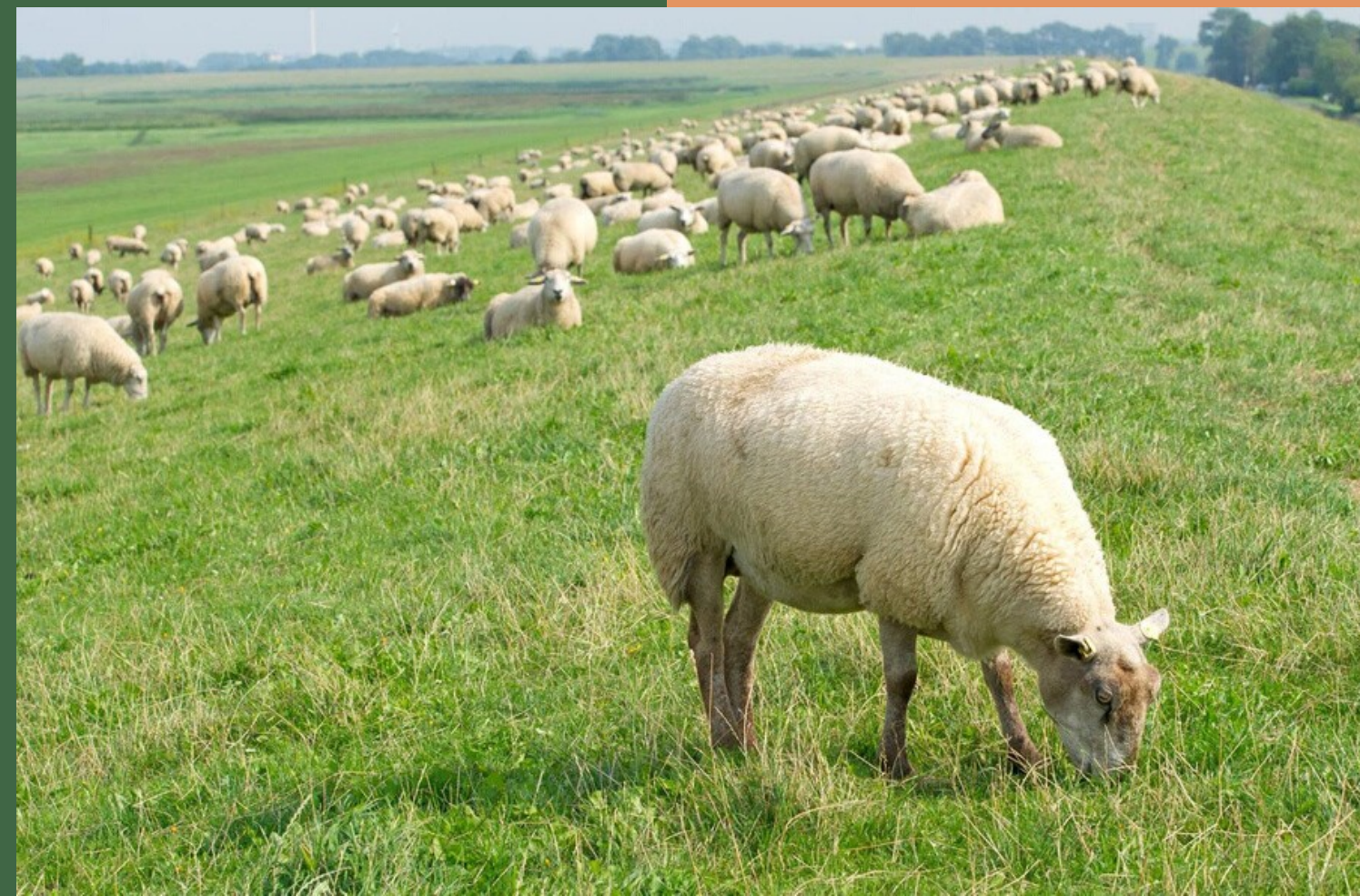
- Sheep eat 3x more than goats per day, but prefer ground level grasses.

## Steep Slopes:

- Goats eat from their eye level down, have a wide diet and graze on steep slopes.

## Vegetation 6+ Feet off the ground:

- Goats rarely eat anything higher than eye level.
- Mostly eat leafy/green vegetation.





# Grazing Viability

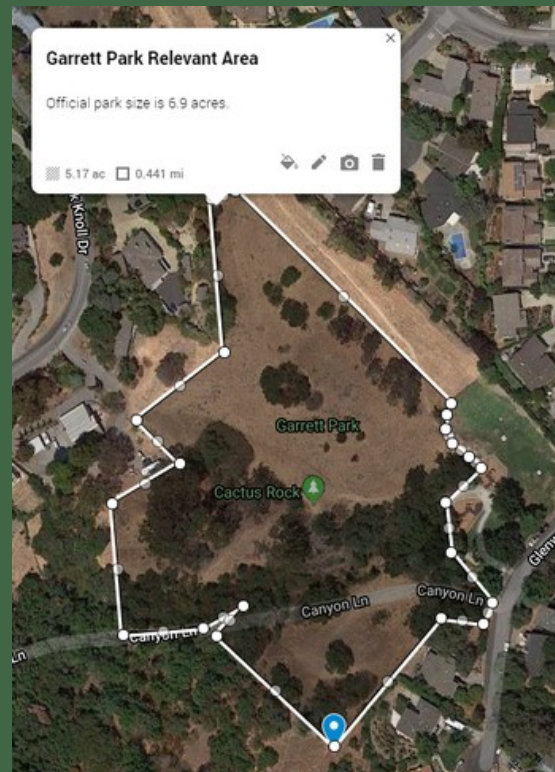
## FACTORS TO CONSIDER

---



### Habitat Type

Protected or rare habitat?



### Acreage

Vendors have limited range.



### Slope

Mowers > Goats where possible.



### Terrain

Shrub filled forest canopy, goats are ideal.



### Location

Wildland Urban Interface (WUI) > fields.



# Grazing Viability

## SERVICES TO PROVIDE

---

### Parking

1 trailer for every  
80/100 goats.



### Water Fill-up

- 3 gallons per goat per day.
- Whose tanks?



### Power and Drinking Water

Camper trailers host one 24/7 herder  
who requires a power hookup and a  
drinking water supply.



### Communication

- Emergency Contact number?
- Public outreach?
- Who answers a weekend complaint?
- Which department gets charges for responding?
- Contact signage on camper trailer?





# Grazing Windows

MARCH - RAINY SEASON

---

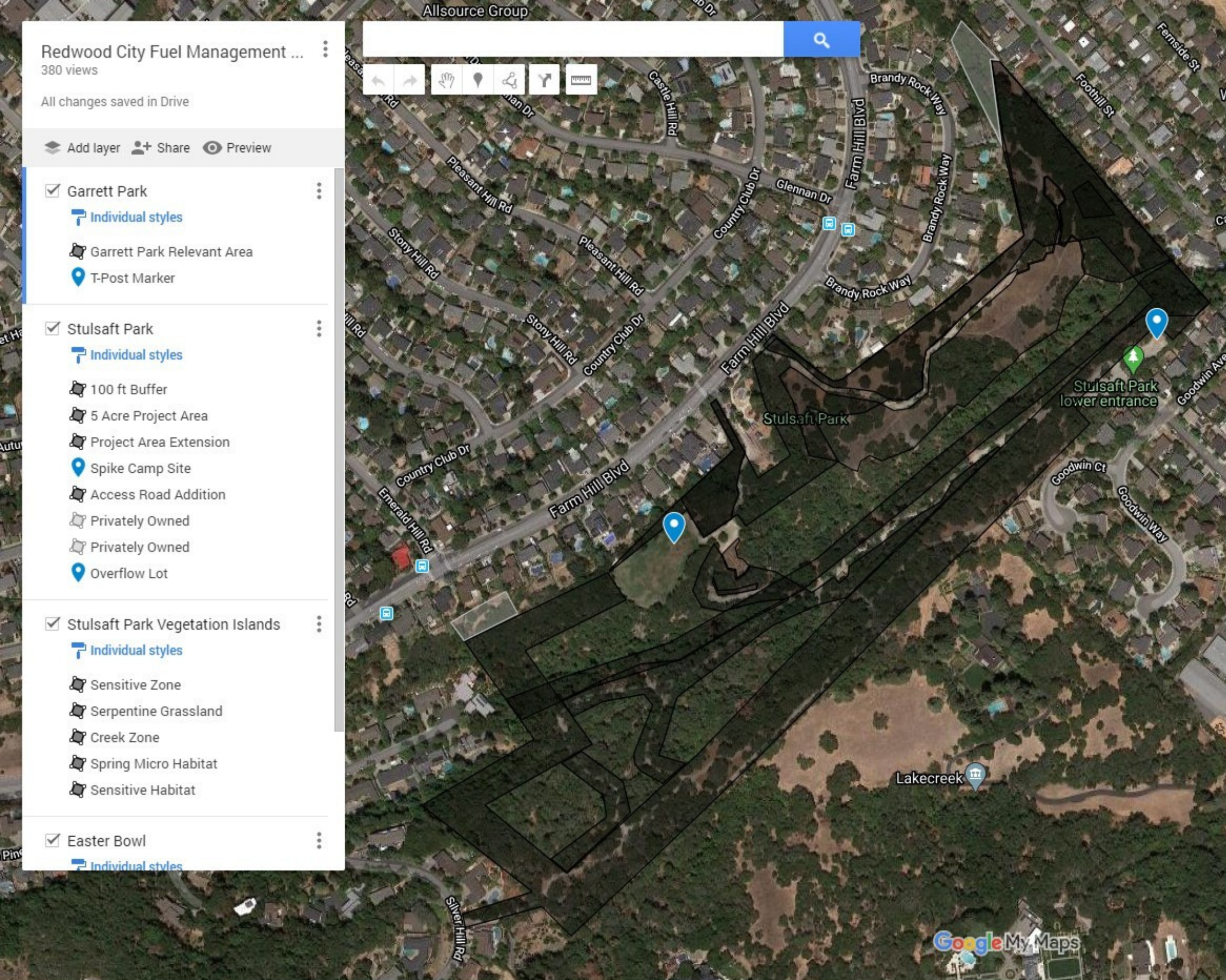
## Compaction

Grazing animals will trample ground when the ground is saturated.

## Protected Plant Caveat

Protected plants may have pollination/seed droppings you may want to avoid.





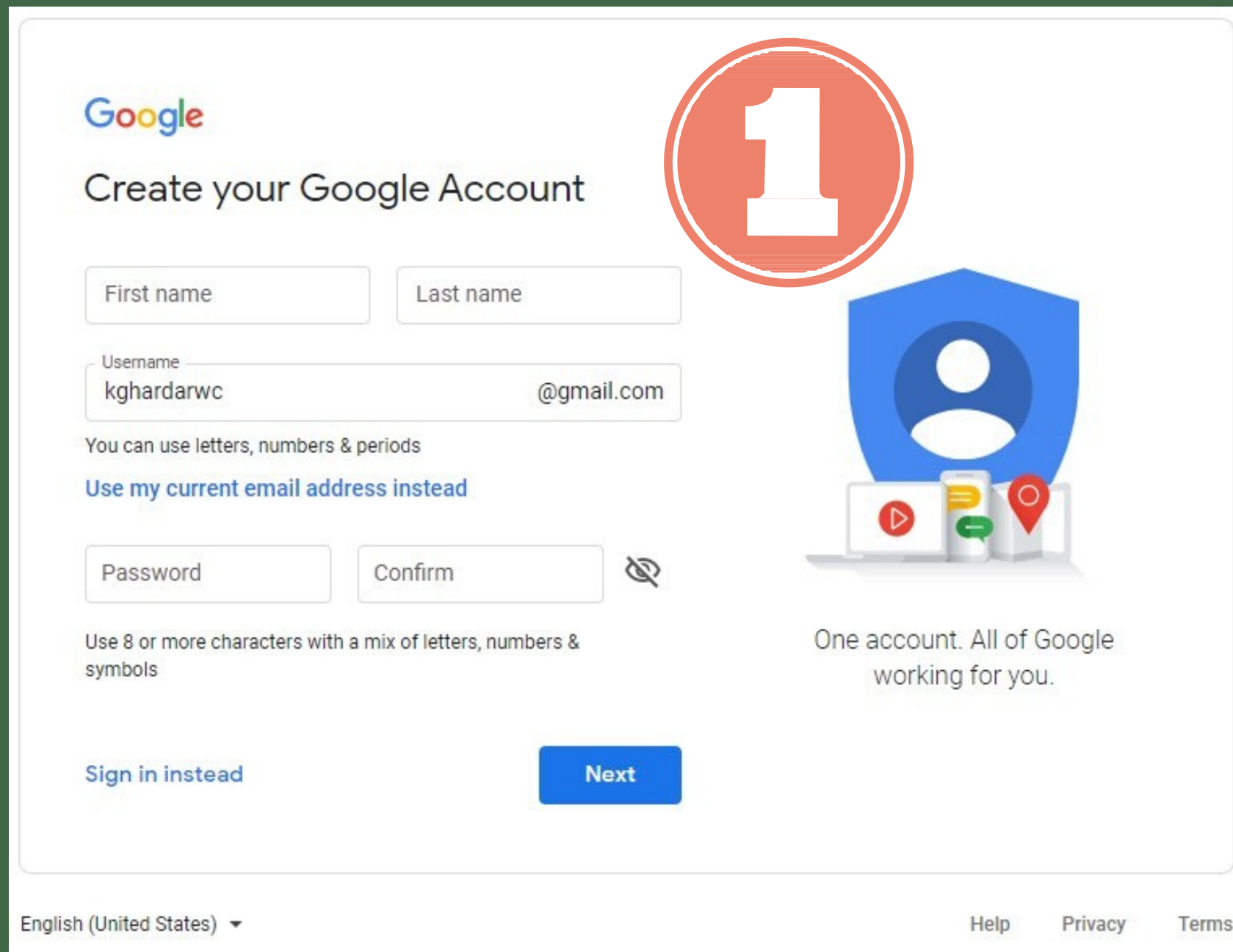
## MEASURE ONCE, BID ONCE

---

A step-by-step guide to  
Google My Maps.



STEP 1: CREATE GENERIC ACCOUNT  
STEP 2: OPEN GOOGLE DRIVE  
STEP 3: RIGHT CLICK TO OPEN GOOGLE MY MAPS



Google

## Create your Google Account

First name  Last name

Username  @gmail.com

You can use letters, numbers & periods

[Use my current email address instead](#)

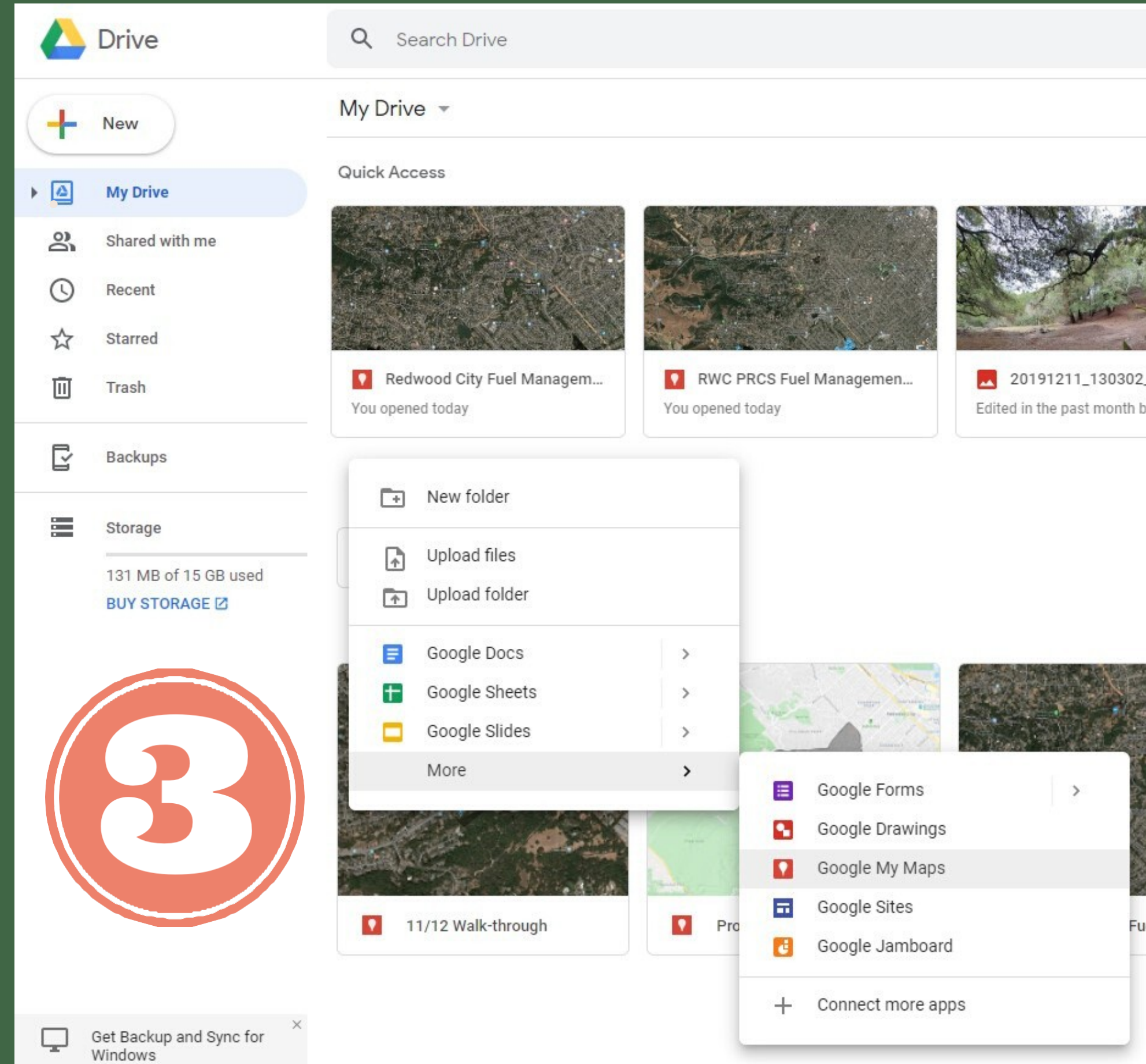
Password  Confirm

Use 8 or more characters with a mix of letters, numbers & symbols

[Sign in instead](#) [Next](#)

One account. All of Google working for you.

English (United States) ▼ [Help](#) [Privacy](#) [Terms](#)



Drive

Search Drive

New

My Drive

Quick Access

Redwood City Fuel Managem...  
You opened today

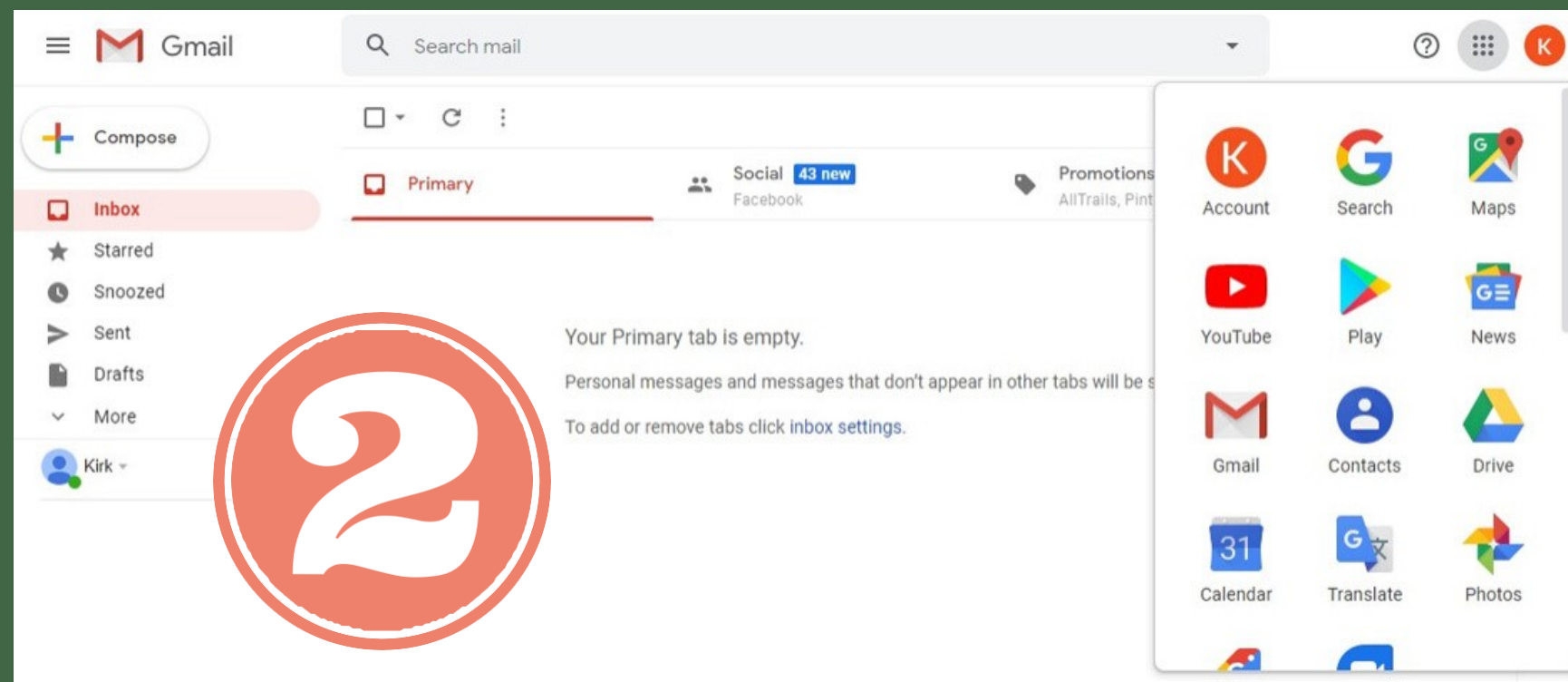
RWC PRCS Fuel Managemen...  
You opened today

20191211\_130302\_...  
Edited in the past month by

11/12 Walk-through

Pro

Get Backup and Sync for Windows



Gmail

Search mail

Compose

Primary

Inbox

Starred

Snoozed

Sent

Drafts

More

Kirk

Your Primary tab is empty.

Personal messages and messages that don't appear in other tabs will be shown here.

To add or remove tabs click [inbox settings](#).

Account

Search

Maps

YouTube

Play

News

Gmail

Contacts

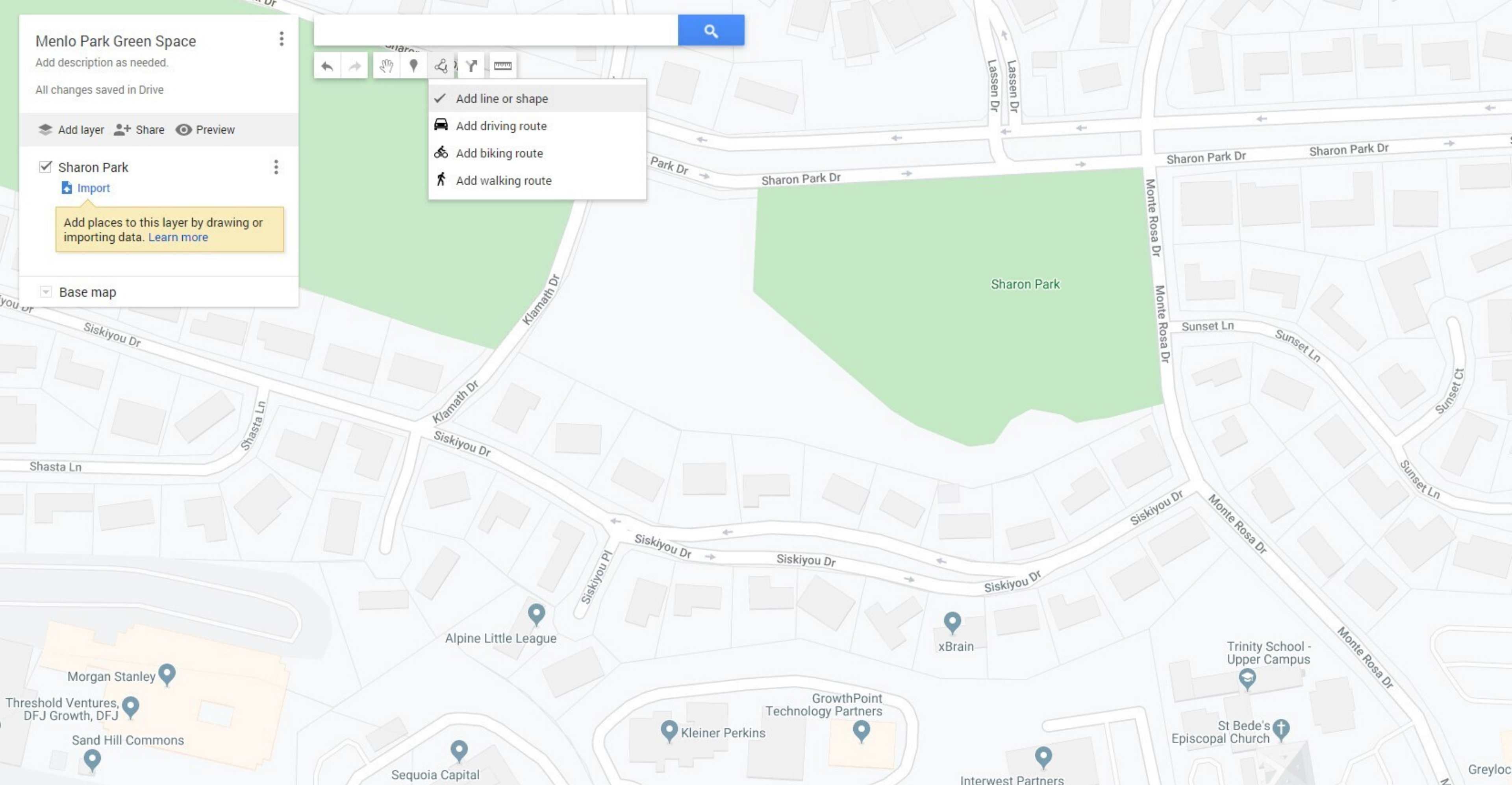
Drive

Calendar

Translate

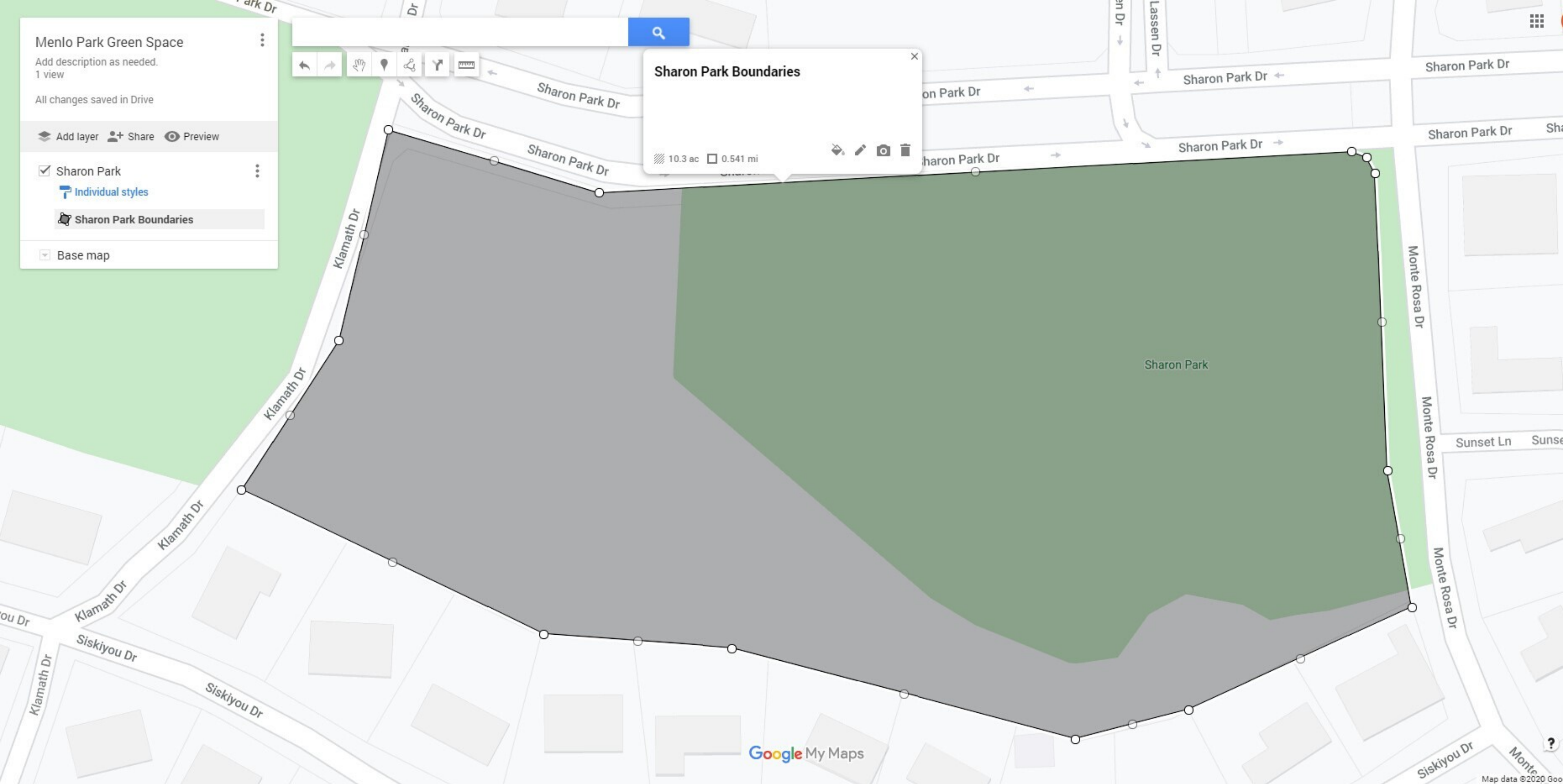
Photos





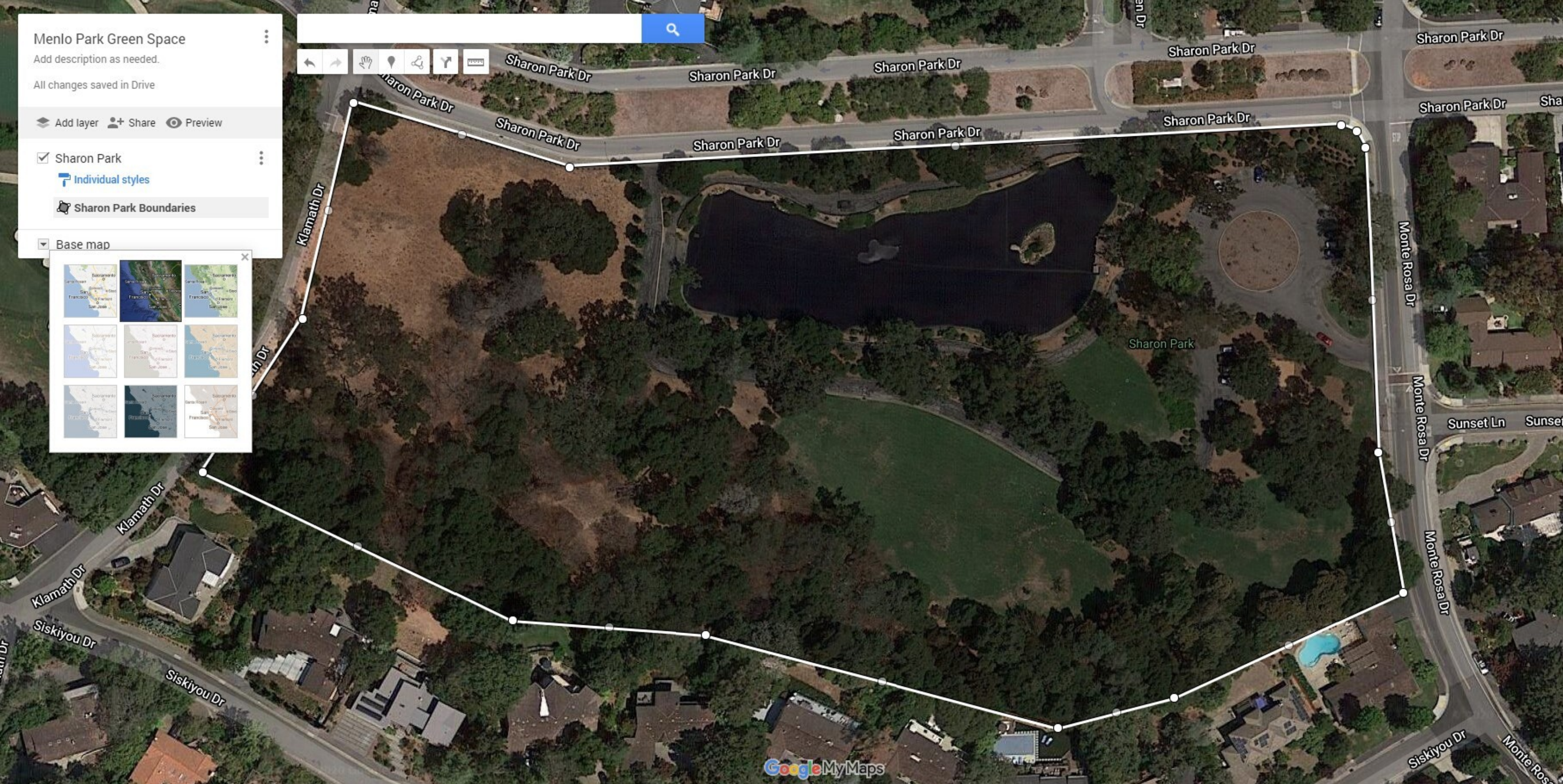
Goal: Reduce Fuel Loads in Sharon Park





- Completed line give acreage and square mileage estimates.
- Line is adjustable, as each magnet point can be moved on demand.





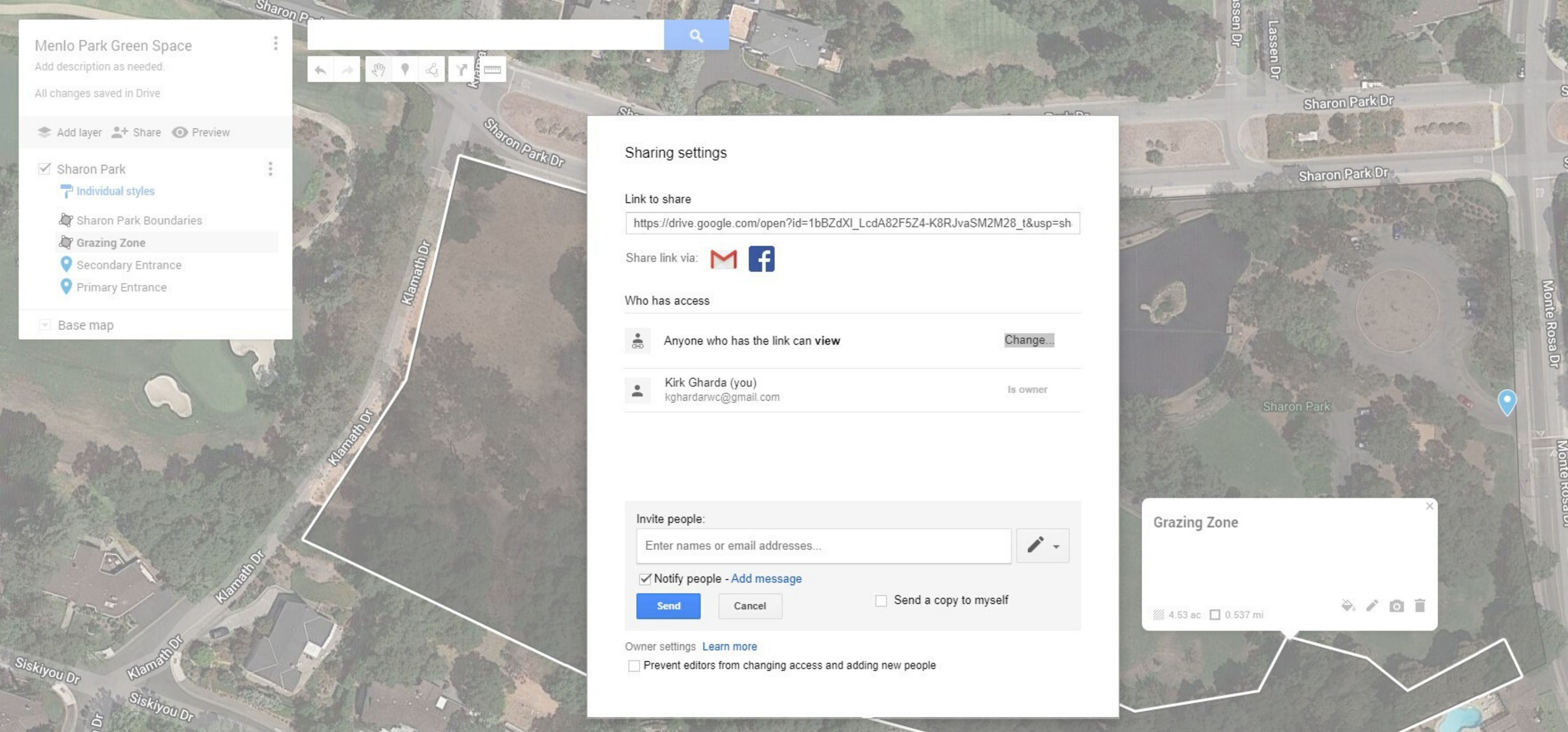
- Base maps can be toggled on demand.
- Google Satellite base map loses parcel lines.





- You can add as many sub layers as you want.
- Markers are easily added, labeled.
- Aphoto can be added to each marker.





- Highlighted "Change" is where you can modify access to link sharing.
- You can add people who can edit, and even transfer ownership of the My Map.
- Google makes it difficult to share editing access to non-gmail accounts.
- Recomend you have an internal and public version if you are doing anything sensitive.



# 3 TYPES OF GOAT VENDORS

## Large Grazers

- Established, older companies
- Graze projects of 5+ acres.
- Cheapest per acre.
- On site for a prescribed number of days.
- Less responsive to specific project needs.





## New Grazers

- Established in the last 4 years.
- Graze projects between 2 and 50 acres.
- Higher cost per acre.
- Very responsive to specific project needs.
- Will reduce vegetation to a specific level



**GREEN GOAT**



**LANDSCAPERS**



# Small Grazer

- Established company
- Graze a max of 2 acres.
- Specialized in micro projects.
- Only game in town for micro projects.

[Home](#)[About](#)[Get A Quote](#)[Volunteer/Donate](#)[Mission and Vision](#)[YoGoats! ▾](#)[Photo Gallery](#)

## HOME

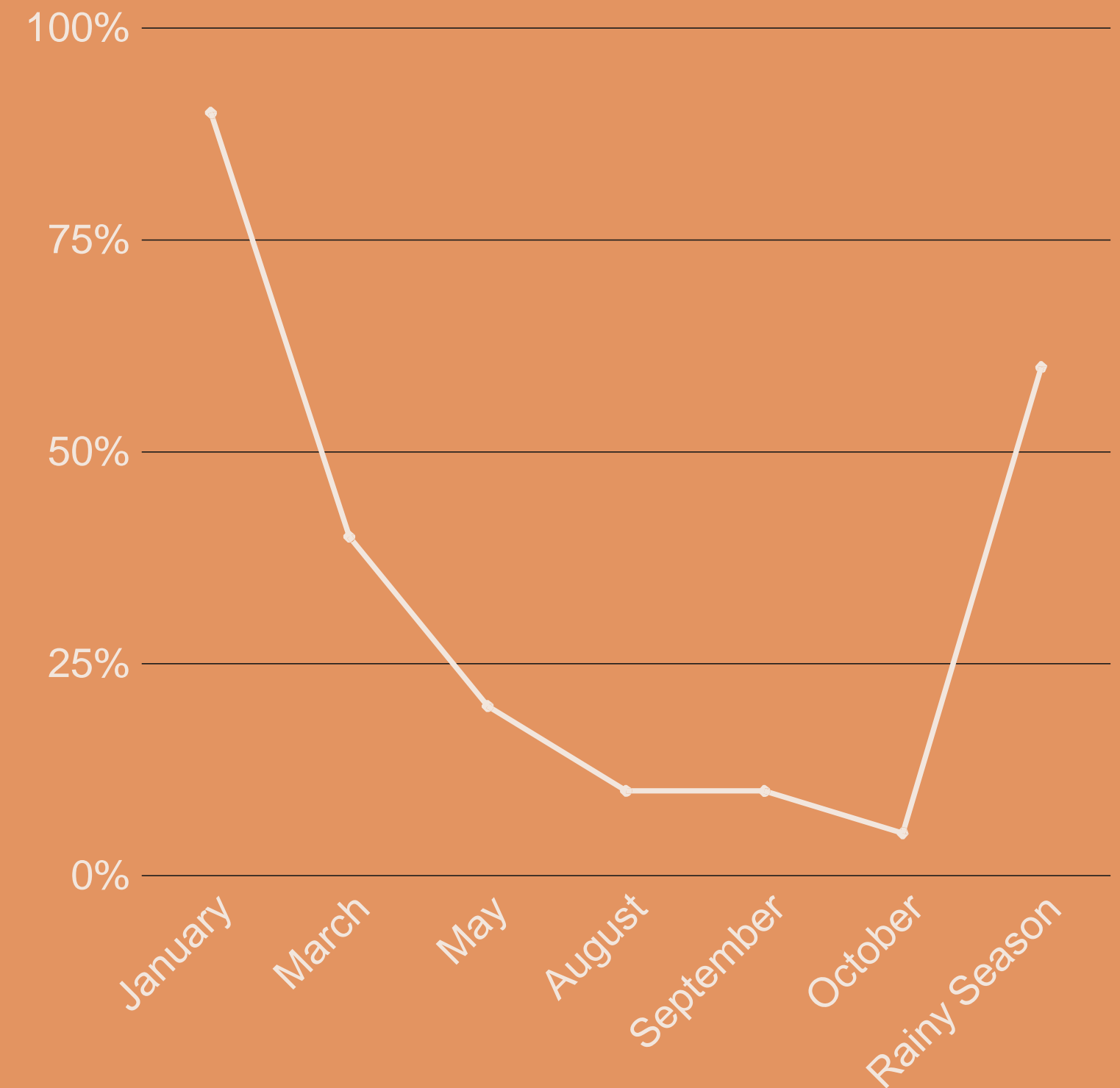
City Grazing is a San Francisco-based goat landscaping non-profit organization dedicated to sustainable land management and fire risk reduction through outreach, education, and implementation of goat grazing. An environmentally beneficial solution to weed control, we rent out goats to clear public and private land. Whether you have an acre or an overgrown backyard, our goats would be eager to eat your weeds and aid in fire prevention naturally. When they are not out on the job our herd lives on pasture in San Francisco's Bayview district between the SF Bay Railroad and Bay Natives Nursery.



# Goat Availability

## A ROUGH GUESTIMATE

- Know what you want.
- Know when you want it.
- Know that vendors prefer to reserve a window of time rather than specific days.
- City flexibility may lead to reduced pricing.
- Vendors love off peak grazing.







---

**Thank you.**

Have a greaaaat day!