

# GROUP EXERCISE #1

Small Site

You inspect a small site not subject to the minimum monthly inspections during the wet season.



What are your findings?  
What enforcement action would you take?  
Would you do anything differently at this small site versus a large or high priority site subject to monthly inspections?

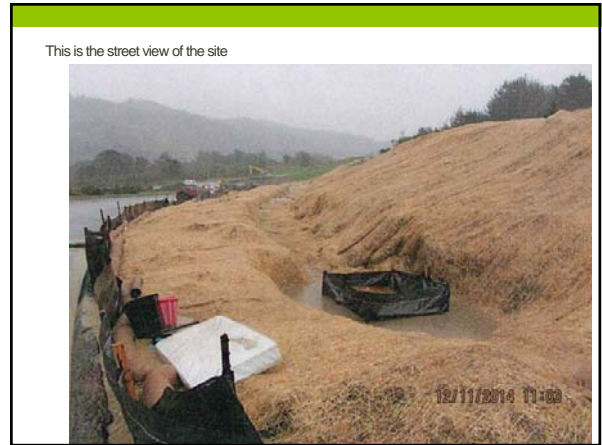


# GROUP EXERCISE #2

Large Sloped Site (San Mateo County)

You inspect a large steep sloped site that has been extensively graded and caught during a big storm with minimal controls.





## Large Hill site

What are your findings?

What enforcement action would you take?

Would you do anything differently at sites like this in the future to prevent the problems?

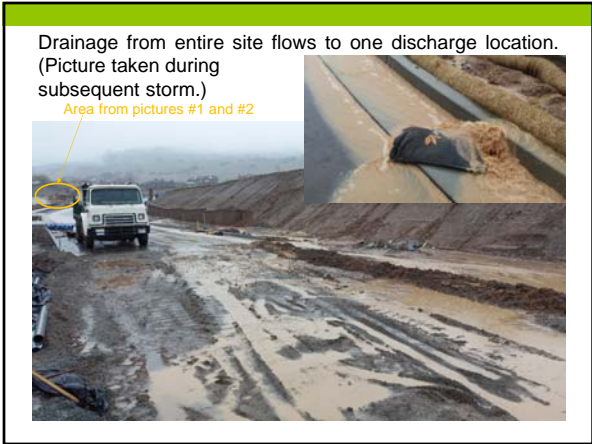
This is what the site looked like a month later.





# GROUP EXERCISE #3

Large Site (Santa Clara County)



## Large Site

What are your findings?  
What enforcement action would you take?  
What should the timeline for corrective actions be?

A temporary sediment basin was built until all erosion control BMPs could be put in place.



The temporary sediment basin was overwhelmed.



The temporary sediment basin was overwhelmed.

Not enough time in between rain events for soil binders to dry - sloughing off in rain events



This is the outlet of the temporary sediment basin.



This is what the site looked like at the final inspection.



This is the final follow-up inspection.



## GROUP EXERCISE #4

Inlet Protection

What should the gravel bag configuration be?



## GROUP EXERCISE #5

Small Site Video

Construction Erosion Control Inspection

